



MS2520LS SERIES ~

Wire Wound Ferrite Chip Inductors



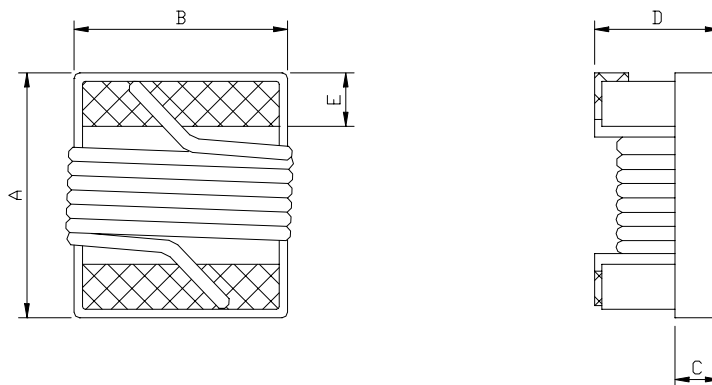
RoHS Compliant

PART NUMBERING SYSTEM

MS	2520LS	—	1R2K	—	LF
TYPE	DIMENSIONS		INDUCTANCE		LEAD FREE

SHAPES AND DIMENSIONS

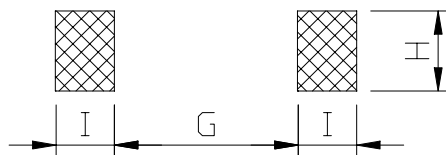
UNIT : mm



A=2.9 Max. B=2.5 Max. C=1.2 Ref. D=2.1 Max. E=0.55±0.1

RECOMMENDED PATTERNS

UNIT : mm



G=1.27 H=2.54 I=1.02



MS2520LS SERIES ~

Wire Wound Ferrite Chip Inductors



RoHS Compliant

SPECIFICATION TABLE

PART NUMBER	INDUCTANCE (uH)	TOLERANCE	Q. MIN.	SRF (MHz) MIN.	DCR (Ω) (max)	Irms (mA) (max)
MS2520LS-1R0□-LF	1.0@25.2MHz	J,K	30@25.2MHz	285	0.80	400
MS2520LS-1R2□-LF	1.2@25.2MHz	J,K	25@25.2MHz	265	0.87	300
MS2520LS-1R5□-LF	1.5@25.2MHz	J,K	25@25.2MHz	235	0.98	260
MS2520LS-1R8□-LF	1.8@25.2MHz	J,K	25@25.2MHz	226	1.10	245
MS2520LS-2R2□-LF	2.2@25.2MHz	J,K	25@25.2MHz	198	1.22	230
MS2520LS-2R7□-LF	2.7@25.2MHz	J,K	25@25.2MHz	180	1.33	220
MS2520LS-3R3□-LF	3.3@25.2MHz	J,K	25@25.2MHz	143	1.46	210
MS2520LS-3R9□-LF	3.9@25.2MHz	J,K	25@25.2MHz	136	1.63	200
MS2520LS-4R7□-LF	4.7@25.2MHz	J,K	25@25.2MHz	105	1.76	195
MS2520LS-5R6□-LF	5.6@25.2MHz	J,K	25@25.2MHz	88	1.97	185
MS2520LS-6R8□-LF	6.8@7.96MHz	J,K	25@7.96MHz	56	1.79	190
MS2520LS-8R2□-LF	8.2@7.96MHz	J,K	25@7.96MHz	48	2.03	180
MS2520LS-100□-LF	10@7.96MHz	J,K	25@7.96MHz	44	2.92	165
MS2520LS-120□-LF	12@7.96MHz	J,K	25@7.96MHz	42	3.11	160
MS2520LS-150□-LF	15@7.96MHz	J,K	25@7.96MHz	37	3.58	155
MS2520LS-180□-LF	18@2.52MHz	J,K	20@2.52MHz	32	3.89	150
MS2520LS-220□-LF	22@2.52MHz	J,K	20@2.52MHz	28	4.38	140
MS2520LS-270□-LF	27@2.52MHz	J,K	20@2.52MHz	24	4.92	130
MS2520LS-330□-LF	33@2.52MHz	J,K	20@2.52MHz	22	5.50	125
MS2520LS-390□-LF	39@2.52MHz	J,K	20@2.52MHz	20	7.51	110
MS2520LS-470□-LF	47@2.52MHz	J,K	20@2.52MHz	18	8.34	100
MS2520LS-560□-LF	56@2.52MHz	J,K	20@2.52MHz	16	9.18	95
MS2520LS-680□-LF	68@2.52MHz	J,K	20@2.52MHz	14	9.61	90
MS2520LS-820□-LF	82@2.52MHz	J,K	20@2.52MHz	12	11.54	80

- ※ Inductance,Q and SRF are measured in HP-E4991A impedance analyzer with HP-16197A fixture.
- ※ Inductance Tolerance : J=5%, K=10%.
- ※ RDC is measured in Chroma 16502 mill ohm meter.(or equivalent)
- ※ Irms For 15°C rise form 25°C ambient.

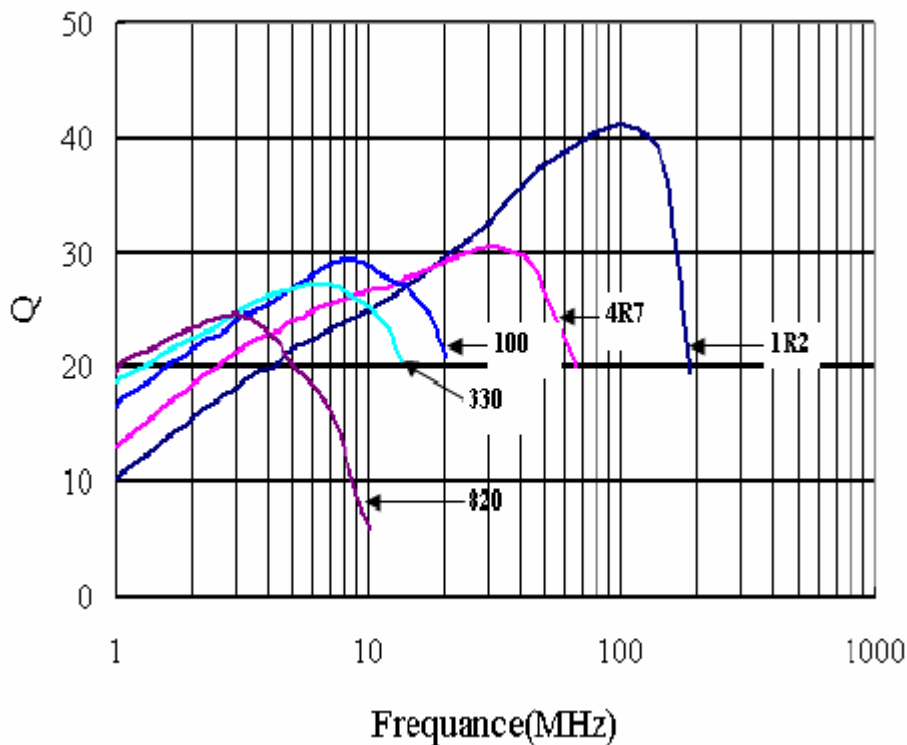
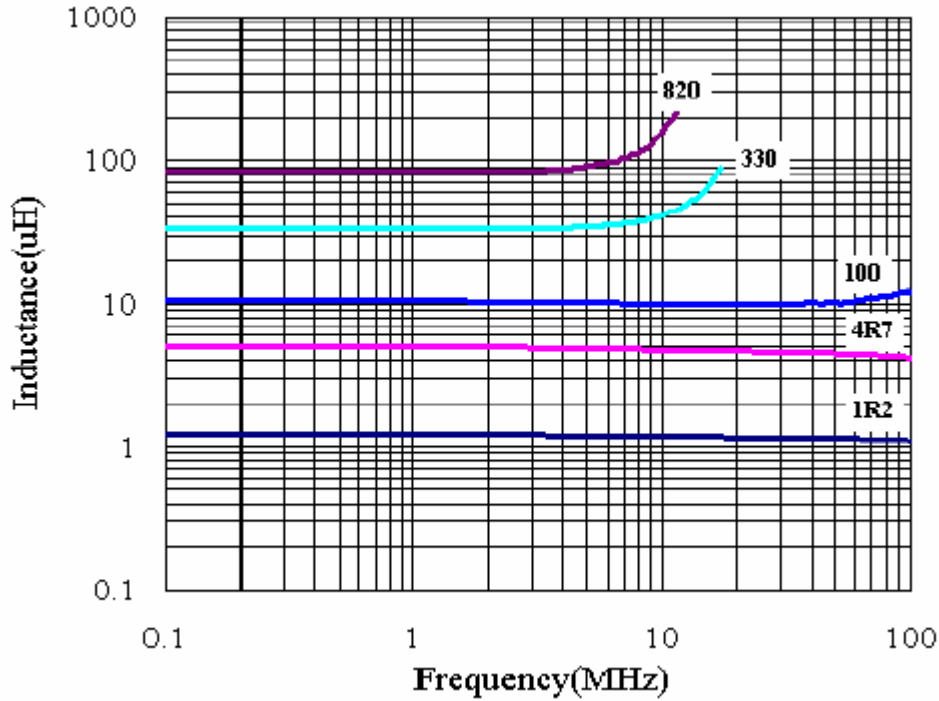


MS2520LS SERIES ~ Wire Wound Ferrite Chip Inductors



RoHS Compliant

CURVE



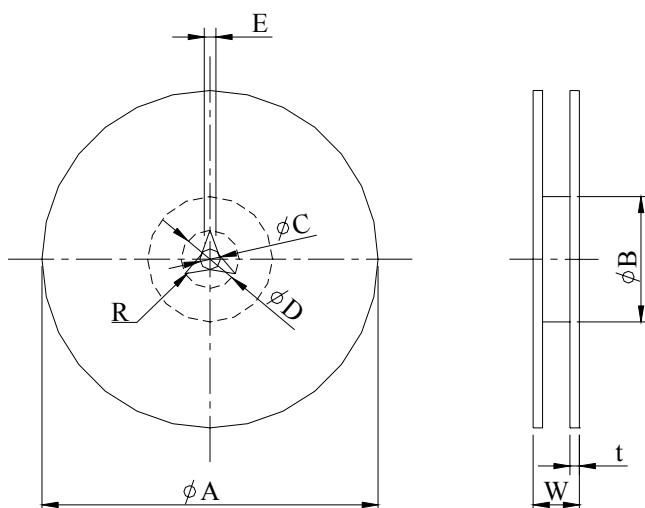


MS2520LS SERIES ~ Wire Wound Ferrite Chip Inductors

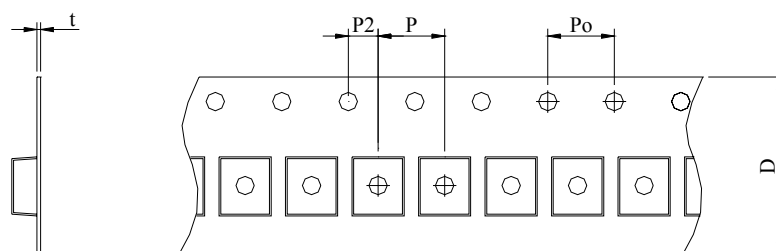


RoHS Compliant

PACKAGING SPECIFICATION



	A	B	C	D	E	W	t	R
T($\phi 180\text{mm}$) Reel	$\phi 180$	$\phi 60$	$\phi 13$	—	—	14.4	—	—



TYPE	Reel/pcs	P	Po	P2	t	D
2520LS	2000	4	4	2	1	8