



## MW3225 SERIES ~ Wire Wound Chip Inductors



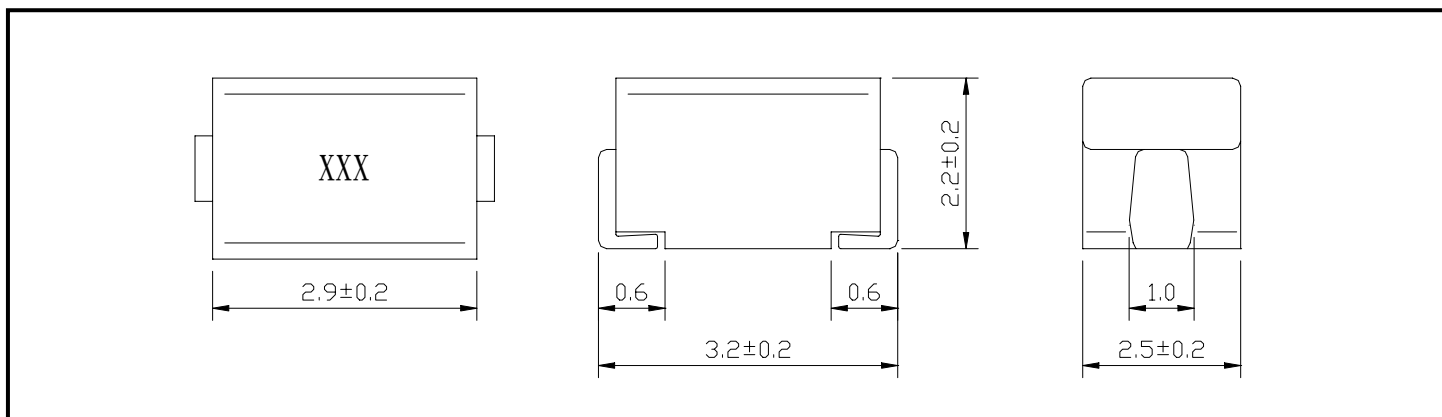
RoHS Compliant

### PART NUMBERING SYSTEM

<u><b>MW</b></u>	<u><b>3 2 2 5</b></u>	—	<u><b>R 1 0 M</b></u>	—	<u><b>LF</b></u>
TYPE	DIMENSIONS		INDUCTANCE		LEAD FREE

### SHAPES AND DIMENSIONS

UNIT : mm



### FEATURES

- Low DC resistance and high current
- Inductance range from 0.1uH to 100uH
- Precision inductance tolerance is available .
- Application for Personal computers, Hard disk drives , XDSL modern and Cable modern .
- RoHS Compliant .



## MW3225 SERIES ~ Wire Wound Chip Inductors



RoHS Compliant

### SPECIFICATION TABLE

PART NUMBER	INDUCTANCE ( $\mu$ H)	Q. MIN.	TEST FREQ (MHz)	SRF (MHz) MIN.	DCR ( $\Omega$ ) (max)	IDC (mA) (max)
MW3225-R10M-LF	0.10 $\pm$ 20%	28	100	700	0.44	450
MW3225-R12M-LF	0.12 $\pm$ 20%	30	25.2	500	0.22	450
MW3225-R15M-LF	0.15 $\pm$ 20%	30	25.2	450	0.25	450
MW3225-R18M-LF	0.18 $\pm$ 20%	30	25.2	400	0.28	450
MW3225-R22M-LF	0.22 $\pm$ 20%	30	25.2	350	0.32	450
MW3225-R27M-LF	0.27 $\pm$ 20%	30	25.2	320	0.36	450
MW3225-R33M-LF	0.33 $\pm$ 20%	30	25.2	300	0.40	400
MW3225-R39M-LF	0.39 $\pm$ 20%	30	25.2	250	0.45	450
MW3225-R47M-LF	0.47 $\pm$ 20%	30	25.2	220	0.50	450
MW3225-R56M-LF	0.56 $\pm$ 20%	30	25.2	180	0.55	450
MW3225-R68M-LF	0.68 $\pm$ 20%	30	25.2	160	0.60	450
MW3225-R82M-LF	0.82 $\pm$ 20%	30	25.2	140	0.65	450
MW3225-1R0K-LF	1.0 $\pm$ 10%	30	7.96	120	0.70	400
MW3225-1R2K-LF	1.2 $\pm$ 10%	30	7.96	100	0.75	390
MW3225-1R5K-LF	1.5 $\pm$ 10%	30	7.96	85	0.85	370
MW3225-1R8K-LF	1.8 $\pm$ 10%	30	7.96	8	0.90	350
MW3225-2R2K-LF	2.2 $\pm$ 10%	30	7.96	75	1.00	320
MW3225-2R7K-LF	2.7 $\pm$ 10%	30	7.96	70	1.10	290
MW3225-3R3K-LF	3.3 $\pm$ 10%	30	7.96	60	1.20	260
MW3225-3R9K-LF	3.9 $\pm$ 10%	30	7.96	55	1.30	250
MW3225-4R7K-LF	4.7 $\pm$ 10%	30	7.96	50	1.50	220
MW3225-5R6K-LF	5.6 $\pm$ 10%	30	7.96	47	1.60	200
MW3225-6R8K-LF	6.8 $\pm$ 10%	30	7.96	43	1.80	180
MW3225-8R2K-LF	8.2 $\pm$ 10%	30	7.96	40	2.00	170
MW3225-100K-LF	10.0 $\pm$ 10%	30	2.52	36	2.10	150
MW3225-120K-LF	12.0 $\pm$ 10%	30	2.52	33	2.50	140
MW3225-150K-LF	15.0 $\pm$ 10%	30	2.52	28	2.80	130
MW3225-180K-LF	18.0 $\pm$ 10%	30	2.52	25	3.30	120
MW3225-220K-LF	22.0 $\pm$ 10%	30	2.52	23	3.70	110
MW3225-270K-LF	27.0 $\pm$ 10%	30	2.52	18	5.00	80
MW3225-330K-LF	33.0 $\pm$ 10%	30	2.52	17	5.60	70
MW3225-390K-LF	39.0 $\pm$ 10%	30	2.52	16	6.40	65
MW3225-470K-LF	47.0 $\pm$ 10%	30	2.52	15	7.00	60
MW3225-560K-LF	56.0 $\pm$ 10%	30	2.52	13	8.00	55
MW3225-680K-LF	68.0 $\pm$ 10%	30	2.52	12	9.00	50
MW3225-820K-LF	82.0 $\pm$ 10%	30	2.52	11	10.00	45
MW3225-101K-LF	100 $\pm$ 10%	20	0.769	10	11.00	40

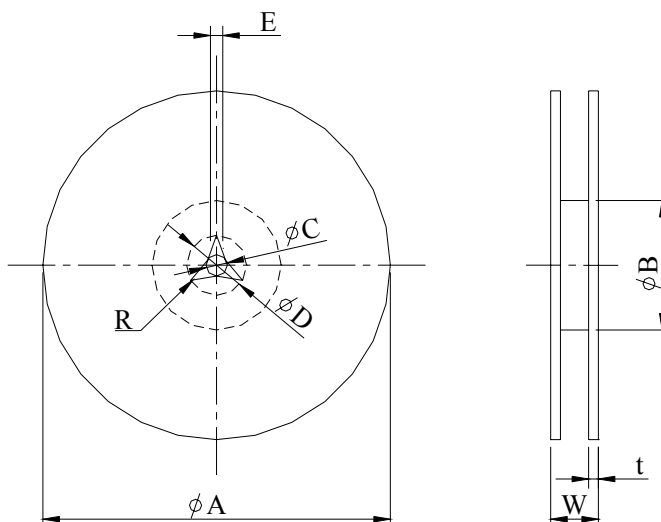


# MW3225 SERIES ~ Wire Wound Chip Inductors

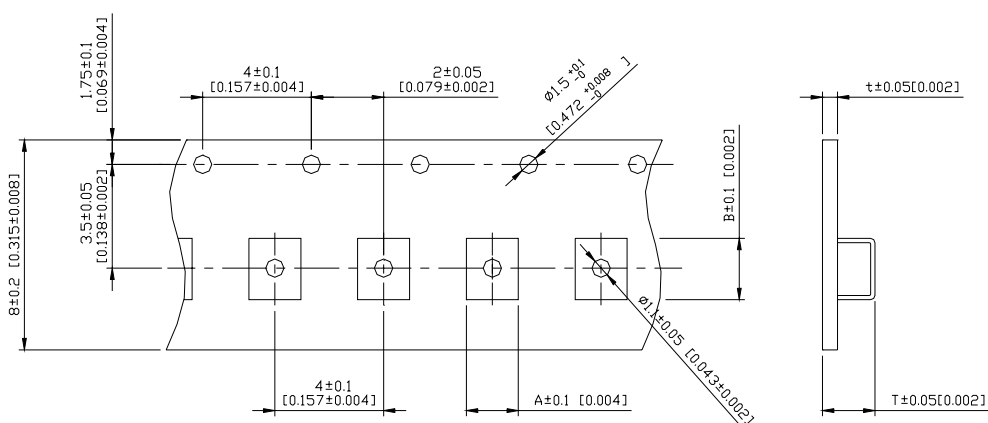


RoHS Compliant

## PACKAGING SPECIFICATION



	A	B	C	D	E	W8	W12	t	R
T( $\phi 178\text{mm}$ ) Reel	$\phi 178\pm 2$	$\phi 60\pm 1$	$\phi 13\pm 0.8$	$\phi 21\pm 0.8$	2	$10\pm 1.5$	$14.5\pm 1.5$	$1.27\pm 0.2$	1
T( $\phi 330\text{mm}$ ) Reel	$\phi 330\pm 2$	$\phi 100\pm 2$	$\phi 13\pm 0.8$	$\phi 21\pm 0.8$	2	$10\pm 1.5$	$14.5\pm 1.5$	$1.27\pm 0.2$	1



TYPE	A	B	T	t	T( $\phi 178\text{mm}$ )	T( $\phi 330\text{mm}$ )
MW3225	2.90	3.60	1.70	0.25	2000 pcs/reel	-