



# MA3216 SERIES ~ Multilayer Chip Suppressions /

## Bead Array



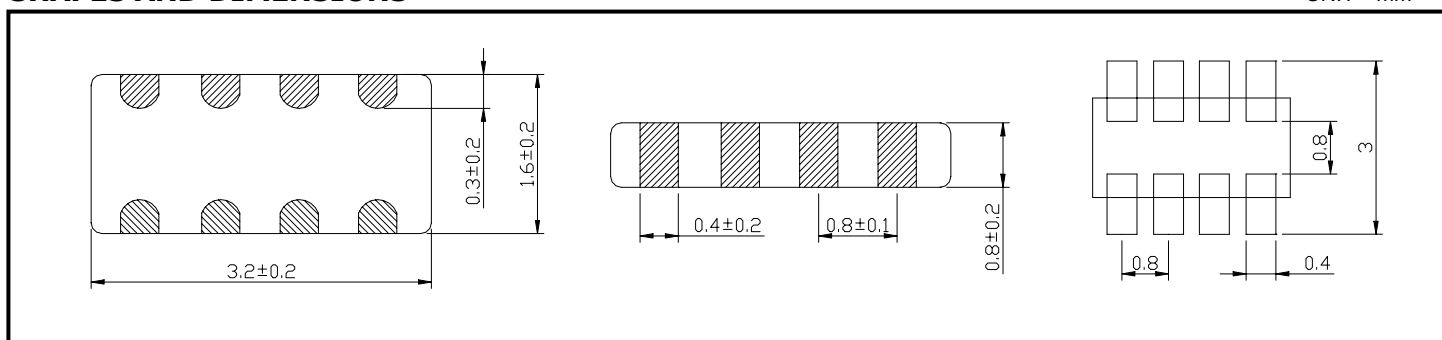
RoHS Compliant

### PART NUMBERING SYSTEM

<u>MA</u>	<u>3 2 1 6</u>	—	<u>3 0 0</u>	—	<u>LF</u>
TYPE	DIMENSIONS		IMPEDANCE		LEAD FREE

### SHAPES AND DIMENSIONS

UNIT : mm



### SPECIFICATION TABLE

PART NUMBER	IMPEDANCE (Ω)	DCR (Ω) (max)	IDC ( mA ) (max)
	at 100MHz		
MA3216-300-LF	30±25%	0.40	350
MA3216-600-LF	60±25%	0.25	200
MA3216-121-LF	120±25%	0.80	150
MA3216-221-LF	220±25%	0.80	150
MA3216-301-LF	300±25%	0.30	150
MA3216-471-LF	470±25%	0.55	100
MA3216-601-LF	600±25%	0.65	100
MA3216-102-LF	1000±25%	0.80	50

- Test equipment : Agilent/HP-4291A impedance analyzer or equipment .
- Operating temperature range -25°C to +85°C .
- Electrical specifications at 25°C.
- Packing : 7" reel, machine-ready ,embossed plastic tape ( 3,000 parts per full reel).

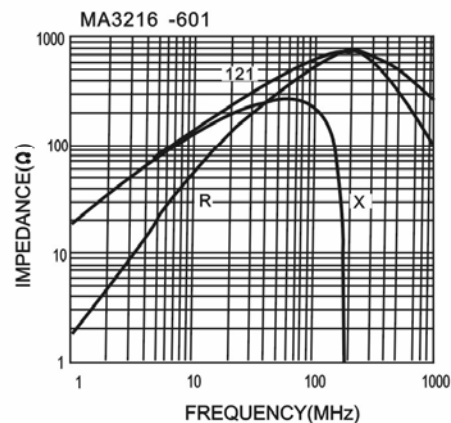
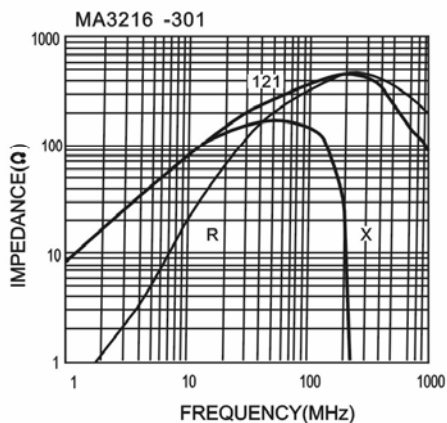
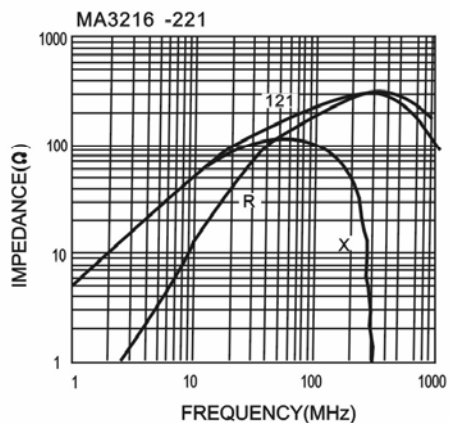
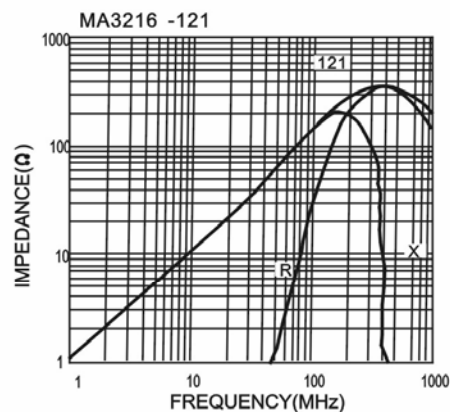
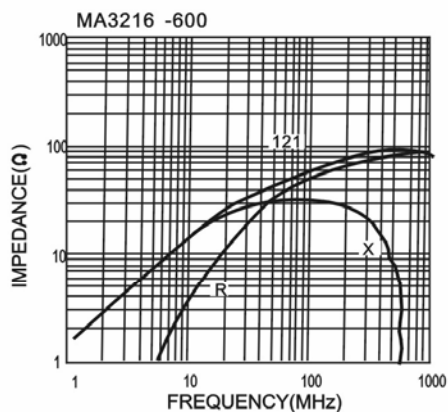
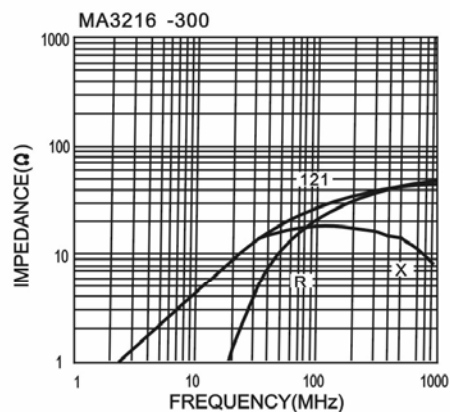


# MA3216 SERIES ~ Multilayer Chip Suppressions /

## Bead Array



RoHS Compliant





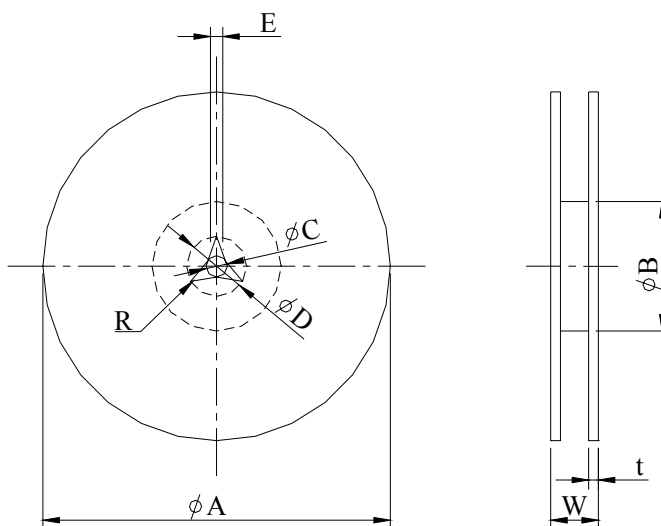
# MA3216 SERIES ~ Multilayer Chip Suppressions /

## Bead Array

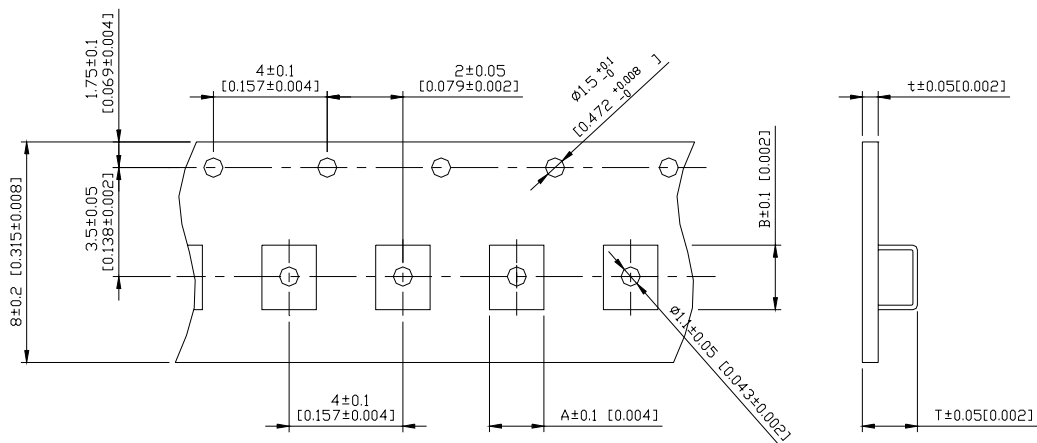
### PACKAGING SPECIFICATION



RoHS Compliant



	A	B	C	D	E	W8	W12	t	R
T( $\phi 178\text{mm}$ ) Reel	$\phi 178\pm 2$	$\phi 60\pm 1$	$\phi 13\pm 0.8$	$\phi 21\pm 0.8$	2	$10\pm 1.5$	$14.5\pm 1.5$	$1.27\pm 0.2$	1
T( $\phi 330\text{mm}$ ) Reel	$\phi 330\pm 2$	$\phi 100\pm 2$	$\phi 13\pm 0.8$	$\phi 21\pm 0.8$	2	$10\pm 1.5$	$14.5\pm 1.5$	$1.27\pm 0.2$	1



TYPE	A	B	T	t	T( $\phi 178\text{mm}$ )	T( $\phi 330\text{mm}$ )
3216	1.90	3.50	1.40	0.2	3000 pcs/reel	-