



RDR855 SERIES ~ Through Hole Power Inductors



RoHS Compliant

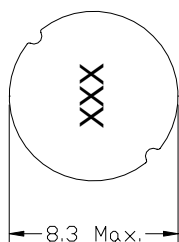
PART NUMBERING SYSTEM

RDR	855	—	100M	—	LF
TYPE	DIMENSIONS		INDUCTANCE		LEAD FREE

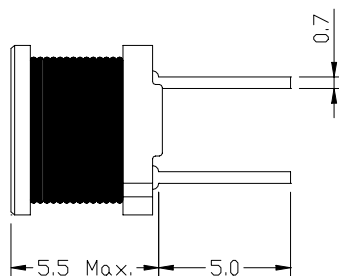
SHAPES AND DIMENSIONS

UNIT : mm

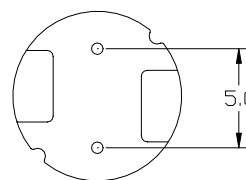
TOP VIEW



FRONT VIEW



BOTTOM VIEW



FEATURES :

- Ideal as a choke coil for noise filtering and DC-DC converter application .
- RoHS Compliant

PLATING / SOLDER : TIN-SILVER-COPPER (95.5%/4.0%/0.5%)



RDR855 SERIES ~ Through Hole Power Inductors



RoHS Compliant

SPECIFICATION TABLE

PART NUMBER	INDUCTANCE (μ H)	DCR (Ω) (Max.)	IDC (A) (Max.)	TEST FREQ. (f)
RDR855-2R5M-LF	2.5 \pm 20%	0.023	4.5	7.96MHz
RDR855-3R3M-LF	3.3 \pm 20%	0.026	4.0	7.96MHz
RDR855-4R1M-LF	4.1 \pm 20%	0.031	3.6	7.96MHz
RDR855-5R0M-LF	5.0 \pm 20%	0.034	3.4	7.96MHz
RDR855-5R9M-LF	5.9 \pm 20%	0.039	3.2	7.96MHz
RDR855-6R8M-LF	6.8 \pm 20%	0.042	2.9	7.96MHz
RDR855-8R2M-LF	8.2 \pm 20%	0.045	2.7	7.96MHz
RDR855-100M-LF	10 \pm 20%	0.07	2.5	2.52MHz
RDR855-120M-LF	12 \pm 20%	0.08	2.4	2.52MHz
RDR855-150M-LF	15 \pm 20%	0.09	2.1	2.52MHz
RDR855-180M-LF	18 \pm 20%	0.10	2.0	2.52MHz
RDR855-220K-LF	22 \pm 10%	0.12	1.7	2.52MHz
RDR855-270K-LF	27 \pm 10%	0.14	1.6	2.52MHz
RDR855-330K-LF	33 \pm 10%	0.17	1.4	2.52MHz
RDR855-390K-LF	39 \pm 10%	0.21	1.3	2.52MHz
RDR855-470K-LF	47 \pm 10%	0.24	1.2	2.52MHz
RDR855-560K-LF	56 \pm 10%	0.31	1.1	2.52MHz
RDR855-680K-LF	68 \pm 10%	0.34	1.0	2.52MHz
RDR855-820K-LF	82 \pm 10%	0.40	0.93	2.52MHz
RDR855-101K-LF	100 \pm 10%	0.52	0.81	1KHz
RDR855-121K-LF	120 \pm 10%	0.59	0.76	1KHz
RDR855-151K-LF	150 \pm 10%	0.71	0.67	1KHz
RDR855-181K-LF	180 \pm 10%	0.89	0.62	1KHz
RDR855-221K-LF	220 \pm 10%	1.04	0.54	1KHz
RDR855-271K-LF	270 \pm 10%	1.28	0.49	1KHz
RDR855-331K-LF	330 \pm 10%	1.47	0.44	1KHz
RDR855-391K-LF	390 \pm 10%	1.67	0.41	1KHz
RDR855-471K-LF	470 \pm 10%	1.95	0.38	1KHz
RDR855-561K-LF	560 \pm 10%	2.83	0.35	1KHz
RDR855-681K-LF	680 \pm 10%	3.25	0.32	1KHz
RDR855-821K-LF	820 \pm 10%	3.82	0.31	1KHz
RDR855-102K-LF	1000 \pm 10%	5.28	0.25	1KHz
RDR855-122K-LF	1200 \pm 10%	6.03	0.23	1KHz
RDR855-152K-LF	1500 \pm 10%	7.15	0.21	1KHz
RDR855-182K-LF	1800 \pm 10%	8.26	0.2	1KHz
RDR855-222K-LF	2200 \pm 10%	11.1	0.18	1KHz
RDR855-272K-LF	2700 \pm 10%	13.1	0.16	1KHz
RDR855-332K-LF	3300 \pm 10%	15.9	0.14	1KHz
RDR855-392K-LF	3900 \pm 10%	18.0	0.13	1KHz
RDR855-472K-LF	4700 \pm 10%	23.9	0.12	1KHz
RDR855-562K-LF	5600 \pm 10%	26.8	0.11	1KHz
RDR855-682K-LF	6800 \pm 10%	31.7	0.098	1KHz
RDR855-822K-LF	8200 \pm 10%	46.5	0.088	1KHz
RDR855-103K-LF	10000 \pm 10%	55.7	0.081	1KHz

1. Operating temperature range -40°C to +85°C
2. Electrical specifications at 25°C