



SDC3D28LD SERIES

SMD Shielded Power Inductors



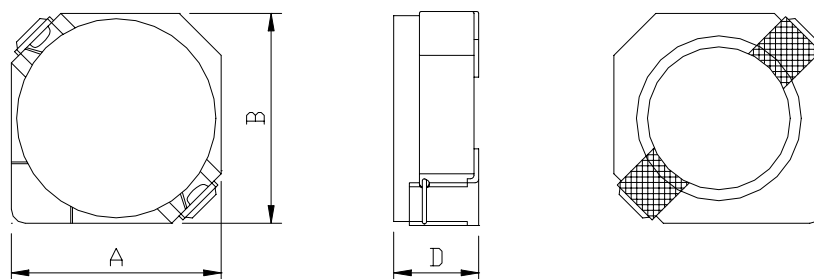
RoHS Compliant

PART NUMBERING SYSTEM

<u>SDC</u>	<u>3D28LD</u>	—	<u>2 2 1 N</u>	—	<u>LF</u>
TYPE	DIMENSIONS		INDUCTANCE		LEAD FREE

SHAPES AND DIMENSIONS

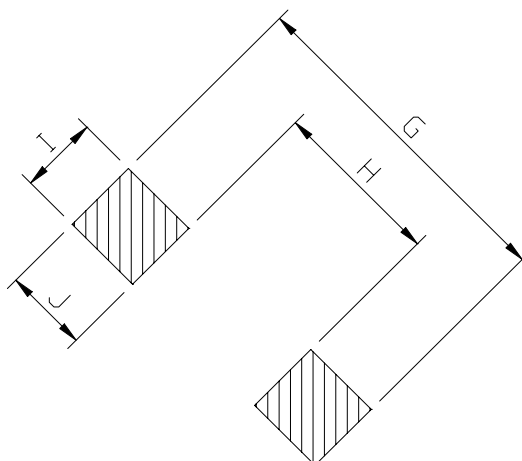
UNIT : mm



A=4.00 max. B=4.00 max. D=3.0 max.

RECOMMENDED PATTERNS

UNIT : mm



G= 5.2 H= 2.4 I = 1.5 J = 1.4



SDC3D28LD SERIES

SMD Shielded Power Inductors



RoHS Compliant

FEATURES

1. **Compact, low profile shielded power inductor** - only **3,0 mm** high, **4.0 mm** square
2. **Low DC resistance**
3. Inductance range from **10uH to 220uH** .
4. **RoHS-compliant.** 260°C compatible.

SPECIFICATION TABLE

PART NUMBER	INDUCTANCE (μ H)	DCR (m Ω) (Max.)	Isat (A) (Max.)	Irms (A) (Max.)	TEST FREQ. (f)
SDC3D28LD-100N-LF	10 \pm 30%	95	0.500	1.520	100KHz/1V
SDC3D28LD-120N-LF	12 \pm 30%	110	0.450	1.480	100KHz/1V
SDC3D28LD-150N-LF	15 \pm 30%	115	0.400	1.440	100KHz/1V
SDC3D28LD-180N-LF	18 \pm 30%	125	0.350	1.370	100KHz/1V
SDC3D28LD-220N-LF	22 \pm 30%	145	0.330	1.280	100KHz/1V
SDC3D28LD-270N-LF	27 \pm 30%	175	0.290	1.180	100KHz/1V
SDC3D28LD-330N-LF	33 \pm 30%	215	0.280	1.150	100KHz/1V
SDC3D28LD-390N-LF	39 \pm 30%	225	0.250	1.000	100KHz/1V
SDC3D28LD-470N-LF	47 \pm 30%	305	0.230	0.810	100KHz/1V
SDC3D28LD-560N-LF	56 \pm 30%	325	0.200	0.760	100KHz/1V
SDC3D28LD-680N-LF	68 \pm 30%	470	0.185	0.600	100KHz/1V
SDC3D28LD-820N-LF	82 \pm 30%	540	0.172	0.580	100KHz/1V
SDC3D28LD-101N-LF	100 \pm 30%	610	0.160	0.520	100KHz/1V
SDC3D28LD-121N-LF	120 \pm 30%	755	0.136	0.500	100KHz/1V
SDC3D28LD-151N-LF	150 \pm 30%	880	0.124	0.480	100KHz/1V
SDC3D28LD-181N-LF	180 \pm 30%	1130	0.119	0.420	100KHz/1V
SDC3D28LD-221N-LF	220 \pm 30%	1270	0.116	0.360	100KHz/1V

- Isat : DC current at which the inductance drops 35% (typ) from its value without current.
- Irms: The actual current when temperature of coil becomes $\Delta 40^{\circ}\text{C}$. (Ta=+20°C)
- Operating temperature range -40°C to +85°C , Electrical specifications at 20°C.
- Packing : 13" reel, machine-ready ,embossed plastic tape (2,000 parts per full reel)..