



# SDC3D18 SERIES

## Low Profile Shielded Power Inductors



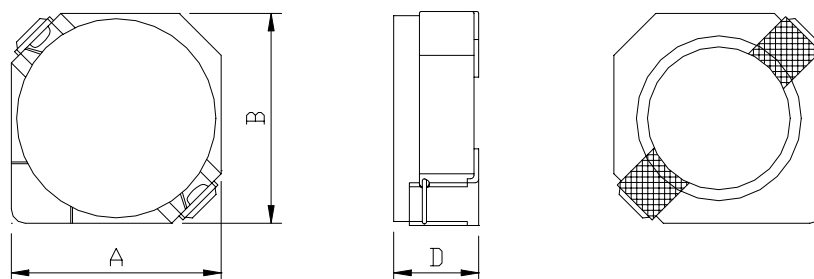
RoHS Compliant

### PART NUMBERING SYSTEM

<b>SDC</b>	<b>3D18</b>	—	<b>100N</b>	—	<b>LF</b>
TYPE	DIMENSIONS		INDUCTANCE		LEAD FREE

### SHAPES AND DIMENSIONS

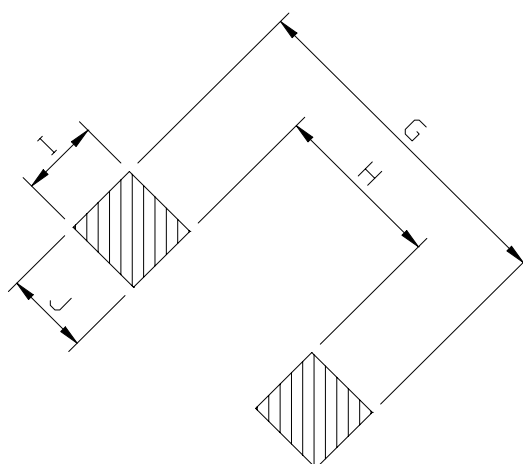
UNIT : mm



**A=4.00 max. B=4.00 max. D=2.0 max.**

### RECOMMENDED PATTERNS

UNIT : mm



**G= 5.2 H= 2.4 I = 1.5 J = 1.4**



## SDC3D18 SERIES

### Low Profile Shielded Power Inductors



RoHS Compliant

#### FEATURES

1. Magnetically shielded construction
2. Size : **4.0(L)x4.0(W)x2.0(Ht)** mm Max.
3. Inductance range from **1.0uH to 47uH**
4. **DC Current** up to 2.8Amps .
5. **Custom specifications** are available to meet your exact requirements .
6. **RoHS-compliant.** 260°C compatible.

#### SPECIFICATION TABLE

PART NUMBER	INDUCTANCE ( $\mu$ H)	DCR (m $\Omega$ ) (Max.)	Isat (A) ( Max. )	Irms (A) ( Max. )	TEST FREQ. ( f )
SDC3D18-1R0N-LF	1.0 $\pm$ 30%	50	2.80	2.40	100KHz/1V
SDC3D18-2R2N-LF	2.2 $\pm$ 30%	63	1.80	2.00	100KHz/1V
SDC3D18-3R0N-LF	3.0 $\pm$ 30%	69	1.60	1.80	100KHz/1V
SDC3D18-4R7N-LF	4.7 $\pm$ 30%	107.5	1.35	1.35	100KHz/1V
SDC3D18-6R8N-LF	6.8 $\pm$ 30%	150	1.10	1.10	100KHz/1V
SDC3D18-100N-LF	10 $\pm$ 30%	205	0.90	0.90	100KHz/1V
SDC3D18-150N-LF	12 $\pm$ 30%	275	0.80	0.80	100KHz/1V
SDC3D18-150N-LF	15 $\pm$ 30%	302	0.75	0.75	100KHz/1V
SDC3D18-220N-LF	22 $\pm$ 30%	424	0.60	0.60	100KHz/1V
SDC3D18-330N-LF	33 $\pm$ 30%	640	0.50	0.45	100KHz/1V
SDC3D18-470N-LF	47 $\pm$ 30%	964	0.40	0.35	100KHz/1V

- Isat : DC current at which the inductance drops 35% (typ) from its value without current.
- Irms: The actual current when temperature of coil becomes  $\Delta 40^{\circ}\text{C}$  . ( Ta=+20°C )
- Operating temperature range -40°C to +85°C , Electrical specifications at 20°C.
- Packing : 13" reel, machine-ready ,embossed plastic tape ( 2,000 parts per full reel)..