



SDC3D16HP SERIES

Low Profile Shielded Power Inductors



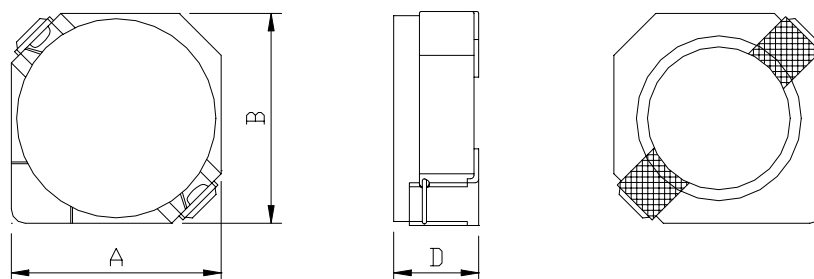
RoHS Compliant

PART NUMBERING SYSTEM

<u>SDC</u>	<u>3D16HP</u>	—	<u>1R7N</u>	—	<u>LF</u>
TYPE	DIMENSIONS		INDUCTANCE		LEAD FREE

SHAPES AND DIMENSIONS

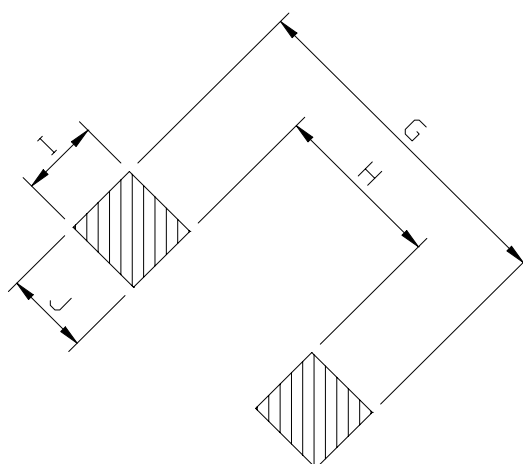
UNIT : mm



A=4.00 max. B=4.00 max. D=1.8 max.

RECOMMENDED PATTERNS

UNIT : mm



G = 5.2 H = 2.4 I = 1.5 J = 1.4



SDC3D16HP SERIES

Low Profile Shielded Power Inductors



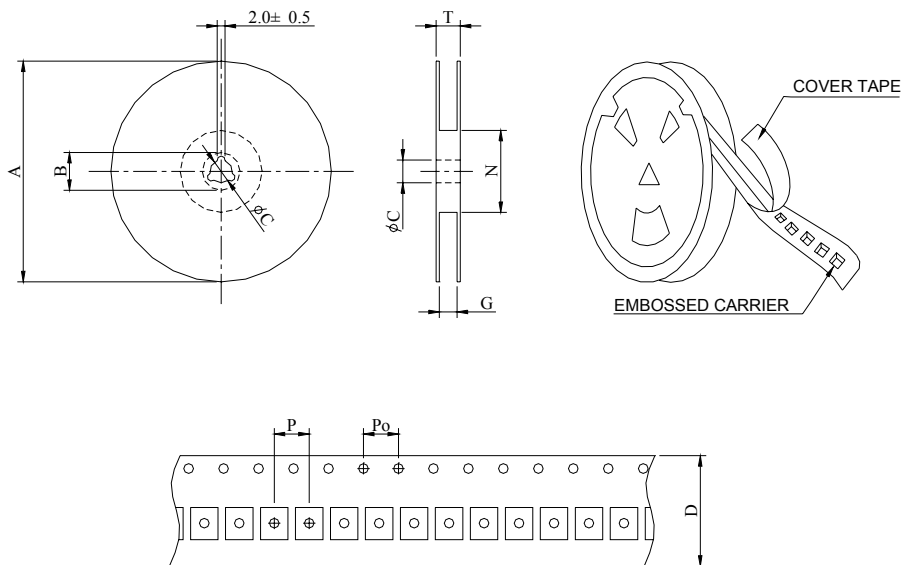
RoHS Compliant

SPECIFICATION TABLE

PART NUMBER	INDUCTANCE (μ H)	DCR (m Ω) (Max.)	Isat (A) (Max.)	Irms (A) (Max.)	TEST FREQ. (f)
SDC3D16HP-1R7N-LF	1.7 \pm 30%	51	2.00	2.40	100KHz
SDC3D16HP-2R2N-LF	2.2 \pm 30%	59	1.75	2.30	100KHz
SDC3D16HP-3R3N-LF	3.3 \pm 30%	85	1.40	1.80	100KHz
SDC3D16HP-4R7N-LF	4.7 \pm 30%	116	1.20	1.50	100KHz
SDC3D16HP-6R8N-LF	6.8 \pm 30%	180	1.00	1.10	100KHz
SDC3D16HP-100M-LF	10 \pm 30%	230	0.84	1.00	100KHz
SDC3D16HP-150M-LF	15 \pm 30%	410	0.65	0.75	100KHz
SDC3D16HP-220M-LF	22 \pm 30%	610	0.55	0.52	100KHz
SDC3D16HP-330M-LF	33 \pm 30%	870	0.46	0.41	100KHz

- Isat : DC current at which the inductance drops 35% (typ) from its value without current.
- Irms: The actual current when temperature of coil becomes $\Delta 40^{\circ}\text{C}$. ($T_a = +20^{\circ}\text{C}$)
- Operating temperature range -40°C to $+85^{\circ}\text{C}$, Electrical specifications at 20°C .
- Packing : 13" reel, machine-ready ,embossed plastic tape (2,000 parts per full reel)..

PACKAGING SPECIFICATION



SERIES	STAYLE	Q' TY (PCS)	DIMENSIONS (m/m)								
			A	B \pm 0.8	C \pm 0.5	D	G ⁺⁰	N ⁰	P	Po	T
SDC3D16HP	13-16	2000	330	21	13	16	18	50	8	4	22.4