



# SDC3D14LD SERIES

## Low Profile Shielded Power Inductors



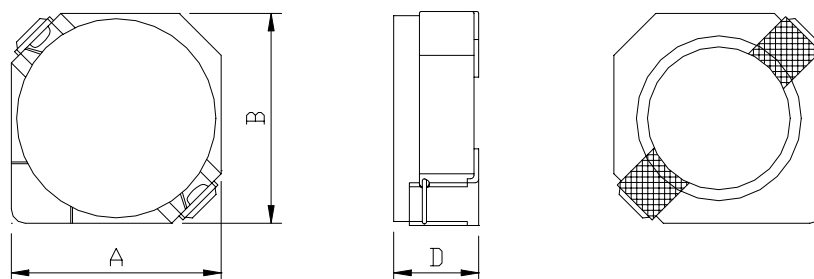
RoHS Compliant

### PART NUMBERING SYSTEM

<u><b>SDC</b></u>	<u><b>3D14LD</b></u>	—	<u><b>1 R 2 N</b></u>	—	<u><b>LF</b></u>
TYPE	DIMENSIONS		INDUCTANCE		LEAD FREE

### SHAPES AND DIMENSIONS

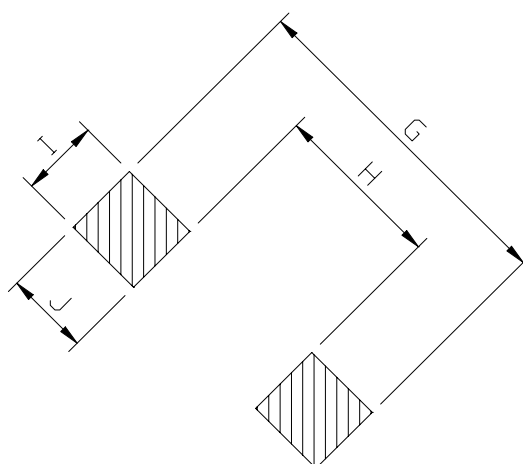
UNIT : mm



**A=4.00 max. B=4.00 max. D=1.5 max.**

### RECOMMENDED PATTERNS

UNIT : mm



**G= 5.2 H= 2.4 I = 1.5 J = 1.4**



## SDC3D14LD SERIES

### Low Profile Shielded Power Inductors

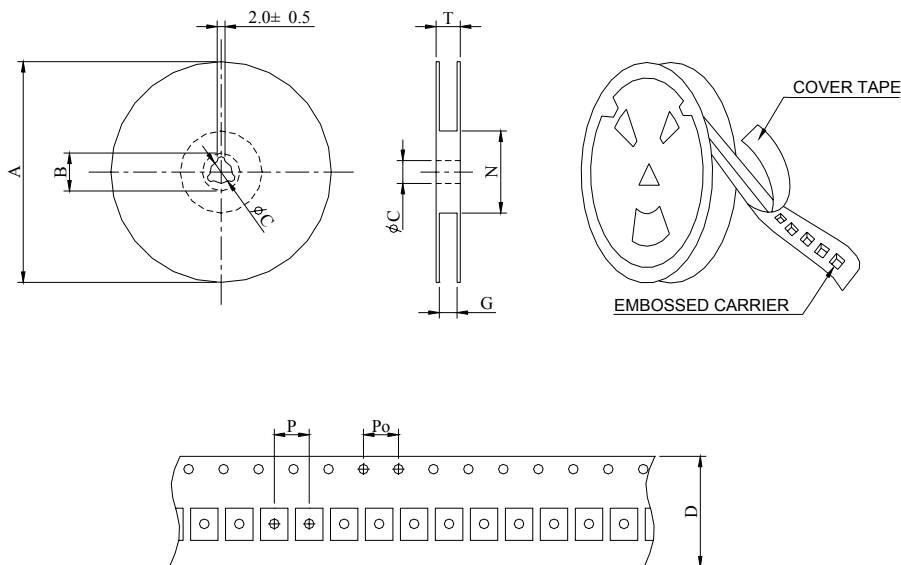


RoHS Compliant

#### SPECIFICATION TABLE

PART NUMBER	INDUCTANCE ( $\mu$ H)	DCR (m $\Omega$ ) (max)	Isat (A) (Max. )	Irms (A) (Max. )	TEST FREQ. ( f )
SDC3D14LD-1R2N-LF	1.2 $\pm$ 30%	38	1.50	2.70	100KHz
SDC3D14LD-1R5N-LF	1.5 $\pm$ 30%	48	1.35	2.40	100KHz
SDC3D14LD-2R0N-LF	2.0 $\pm$ 30%	55	1.15	2.20	100KHz
SDC3D14LD-2R5N-LF	2.5 $\pm$ 30%	68	1.05	1.90	100KHz
SDC3D14LD-3R0N-LF	3.0 $\pm$ 30%	77	0.95	1.60	100KHz
SDC3D14LD-3R9N-LF	3.9 $\pm$ 30%	96	0.80	1.50	100KHz
SDC3D14LD-4R5N-LF	4.5 $\pm$ 30%	105	0.75	1.45	100KHz
SDC3D14LD-5R6N-LF	5.6 $\pm$ 30%	159	0.70	1.10	100KHz
SDC3D14LD-6R8N-LF	6.8 $\pm$ 30%	173	0.60	1.05	100KHz
SDC3D14LD-100N-LF	10 $\pm$ 30%	220	0.50	1.00	100KHz
SDC3D14LD-120N-LF	12 $\pm$ 30%	270	0.45	0.80	100KHz
SDC3D14LD-150N-LF	15 $\pm$ 30%	302	0.40	0.75	100KHz
SDC3D14LD-220N-LF	22 $\pm$ 30%	447	0.35	0.60	100KHz
SDC3D14LD-330N-LF	33 $\pm$ 30%	848	0.30	0.40	100KHz
SDC3D14LD-470N-LF	47 $\pm$ 30%	1080	0.25	0.35	100KHz

#### PACKAGING SPECIFICATION



SERIES	STAYLE	Q' TY (PCS)	DIMENSIONS (m/m)								
			A	B $\pm$ 0.8	C $\pm$ 0.5	D	G <sup>+0</sup>	N <sup>-0</sup>	P	Po	T
SDC3D14LD	13-16	2000	330	21	13	16	18	50	8	4	22.4