



SDC3D14J SERIES

Low Profile Shielded Power Inductors



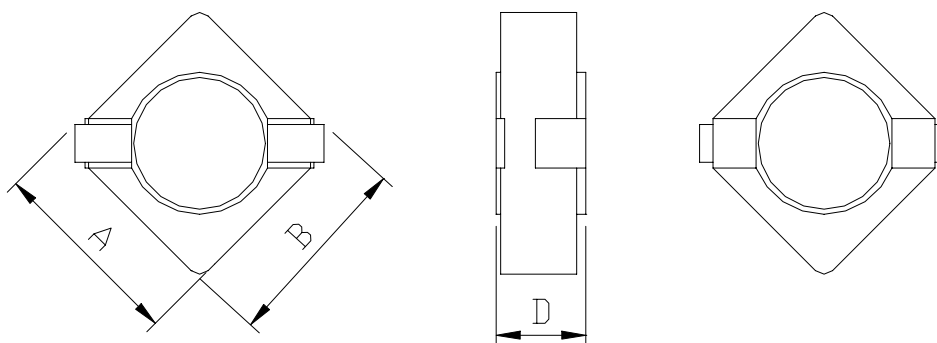
RoHS Compliant

PART NUMBERING SYSTEM

<u>SDC</u>	<u>3 D 1 4 J</u>	—	<u>1 R 5 N</u>	—	<u>LF</u>
TYPE	DIMENSIONS		INDUCTANCE		LEAD FREE

SHAPES AND DIMENSIONS

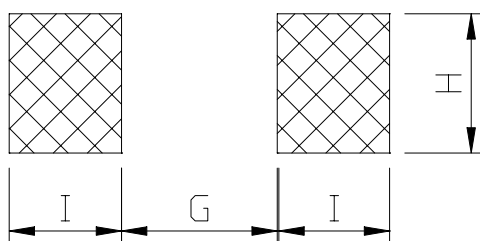
UNIT : mm



A=3.8 max. B=3.8 max. D=1.5 max.

RECOMMENDED PATTERNS

UNIT : mm



G=2.4 H=1.5 I=1.5



SDC3D14J SERIES

Low Profile Shielded Power Inductors



RoHS Compliant

ELECTRICAL CHARACTERISTICS :

PART NUMBER	INDUCTANCE (μ H)	DCR (m Ω) (Max.)	Isat (A) (Max.)	Irms (A) (Max.)	TEST FREQ. (f)
SDC3D14J-1R5N-LF	1.5 \pm 30%	70	2.33	2.35	100KHz
SDC3D14J-3R3N-LF	3.3 \pm 30%	130	1.53	1.68	100KHz
SDC3D14J-4R7N-LF	4.7 \pm 30%	195	1.30	1.36	100KHz
SDC3D14J-5R6N-LF	5.6 \pm 30%	210	1.15	1.31	100KHz
SDC3D14J-6R8N-LF	6.8 \pm 30%	305	1.06	1.08	100KHz
SDC3D14J-8R2N-LF	8.2 \pm 30%	330	0.97	1.04	100KHz
SDC3D14J-100M-LF	10 \pm 20%	370	0.87	0.98	100KHz
SDC3D14J-120M-LF	12 \pm 20%	500	0.80	0.84	100KHz
SDC3D14J-150M-LF	15 \pm 20%	715	0.70	0.71	100KHz
SDC3D14J-220M-LF	22 \pm 20%	880	0.59	0.63	100KHz

- Isat : DC current at which the inductance drops 30% (typ) from its value without current.
- Irms : The actual current when temperature of coil becomes Δ 40°C . (Ta=+25°C)
- Operating temperature range -25°C to +120°C, Electrical specifications at 25°C.
- Packing : 7" reel, machine-ready ,embossed plastic tape (1,000 parts per full reel).