



# SDC2D18HP SERIES

## Low Profile Shielded Power Inductors



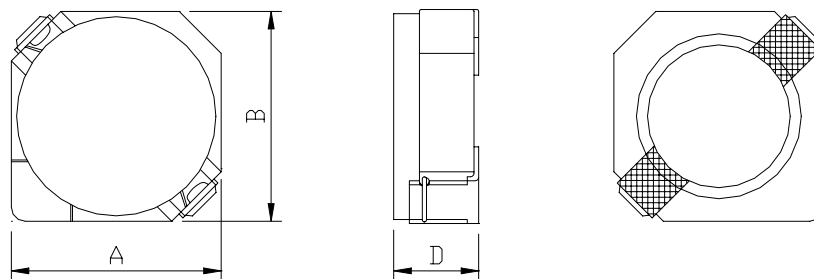
RoHS Compliant

### PART NUMBERING SYSTEM

<b>SDC</b>	<b>2D18HP</b>	—	<b>100N</b>	—	<b>LF</b>
TYPE	DIMENSIONS		INDUCTANCE		LEAD FREE

### SHAPES AND DIMENSIONS

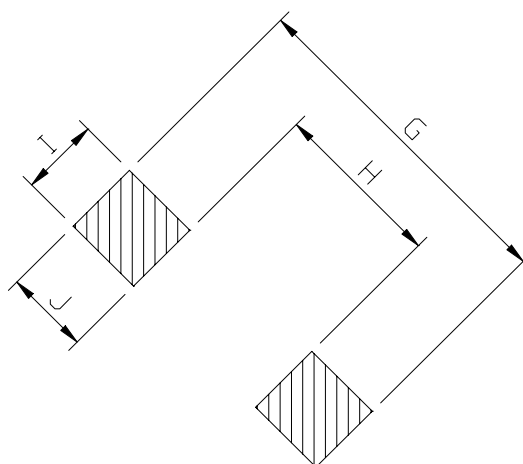
UNIT : mm



**A=3.20 max. B=3.20 max. D=2.0 max.**

### RECOMMENDED PATTERNS

UNIT : mm



**G= 4.3 H= 1.7 I= 1.3 J= 1.3**



## SDC2D18HP SERIES

### Low Profile Shielded Power Inductors



RoHS Compliant

#### ELECTRICAL CHARACTERISTICS :

PART NUMBER	INDUCTANCE ( $\mu$ H)	DCR (m $\Omega$ ) (Max.)	Isat (A) ( Max. )	Irms (A) ( Max. )	TEST FREQ. ( f )
SDC2D18HP-1R7N-LF	1.7 $\pm$ 30%	44	1.85	2.20	100KHz
SDC2D18HP-2R2N-LF	2.2 $\pm$ 30%	60	1.60	1.90	100KHz
SDC2D18HP-3R3N-LF	3.3 $\pm$ 30%	86	1.45	1.55	100KHz
SDC2D18HP-4R7N-LF	4.7 $\pm$ 30%	140	1.20	1.20	100KHz
SDC2D18HP-6R3N-LF	6.8 $\pm$ 30%	160	1.05	1.25	100KHz
SDC2D18HP-100N-LF	10 $\pm$ 30%	245	0.85	0.90	100KHz
SDC2D18HP-150N-LF	15 $\pm$ 30%	345	0.70	0.64	100KHz

- Isat : DC current at which the inductance drops 35% (typ) from its value without current.
- Irms: The actual current when temperature of coil becomes  $\Delta 40^{\circ}\text{C}$  . ( Ta=+20 $^{\circ}\text{C}$  )
- Operating temperature range -40 $^{\circ}\text{C}$  to +85 $^{\circ}\text{C}$  , Electrical specifications at 20 $^{\circ}\text{C}$ .
- Packing : 13" reel, machine-ready ,embossed plastic tape ( 3,500 parts per full reel).
- PLATING / SOLDER : TIN-SILVER-COPPER (95.5%/4.0%/0.5%)