



SDC2D14J SERIES

Low Profile Shielded Power Inductors



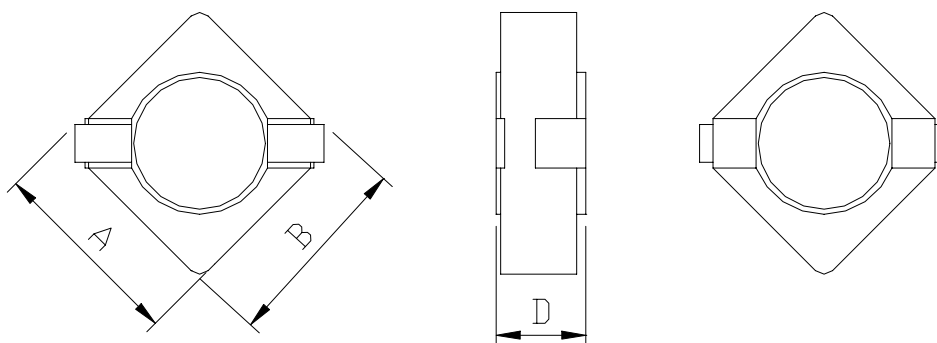
RoHS Compliant

PART NUMBERING SYSTEM

<u>SDC</u>	<u>2 D 1 4 J</u>	—	<u>1 R 5 N</u>	—	<u>LF</u>
TYPE	DIMENSIONS		INDUCTANCE		LEAD FREE

SHAPES AND DIMENSIONS

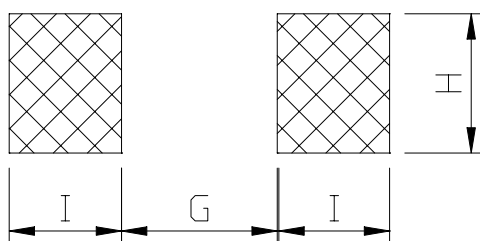
UNIT : mm



A=3.2 max. B=3.2 max. D=1.5 max.

RECOMMENDED PATTERNS

UNIT : mm



G=2.2 H=1.3 I=1.05



SDC2D14J SERIES

Low Profile Shielded Power Inductors



RoHS Compliant

ELECTRICAL CHARACTERISTICS :

PART NUMBER	INDUCTANCE (μ H)	DCR (m Ω) (Max.)	Isat (A) (Max.)	Irms (A) (Max.)	TEST FREQ. (f)
SDC2D14J-1R5N-LF	1.5 \pm 30%	85	1.39	2.07	100KHz
SDC2D14J-3R3N-LF	3.3 \pm 30%	160	0.94	1.48	100KHz
SDC2D14J-4R7N-LF	4.7 \pm 30%	190	0.76	1.38	100KHz
SDC2D14J-5R6N-LF	5.6 \pm 30%	265	0.69	1.16	100KHz
SDC2D14J-6R8N-LF	6.8 \pm 30%	300	0.61	1.10	100KHz
SDC2D14J-8R2N-LF	8.2 \pm 30%	375	0.56	0.98	100KHz
SDC2D14J-100M-LF	10 \pm 20%	420	0.51	0.93	100KHz
SDC2D14J-120M-LF	12 \pm 20%	610	0.48	0.78	100KHz
SDC2D14J-150M-LF	15 \pm 20%	695	0.43	0.73	100KHz
SDC2D14J-220M-LF	22 \pm 20%	820	0.35	0.63	100KHz

- Isat : DC current at which the inductance drops 30% (typ) from its value without current.
- Irms : The actual current when temperature of coil becomes Δ 40°C . (Ta=+25°C)
- Operating temperature range -25°C to +120°C, Electrical specifications at 25°C.
- Packing : 7" reel, machine-ready ,embossed plastic tape (1,000 parts per full reel).