



SDC2D11J SERIES

Low Profile Shielded Power Inductors



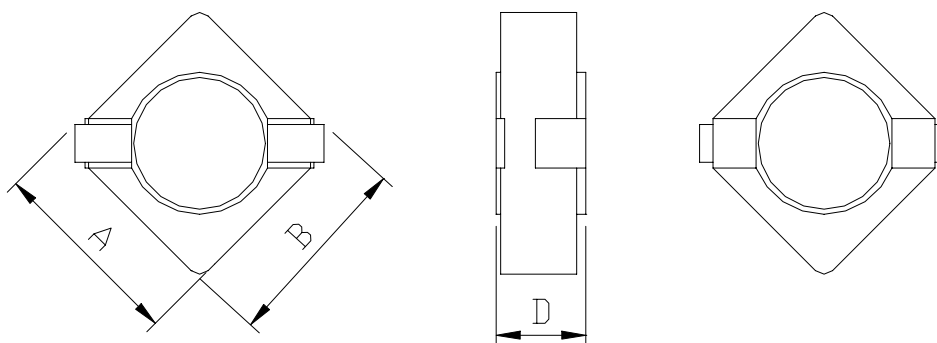
RoHS Compliant

PART NUMBERING SYSTEM

SDC	2 D 1 1 J	—	1 R 5 N	—	LF
TYPE	DIMENSIONS		INDUCTANCE		LEAD FREE

SHAPES AND DIMENSIONS

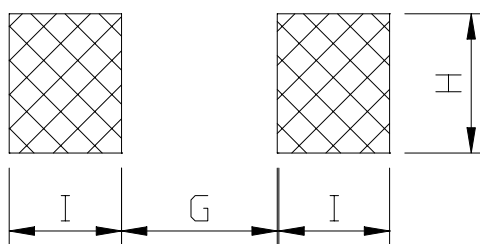
UNIT : mm



A=3.2 max. B=3.2 max. D=1.2 max.

RECOMMENDED PATTERNS

UNIT : mm



G=2.2 H=1.3 I=1.05



SDC2D11J SERIES

Low Profile Shielded Power Inductors



RoHS Compliant

ELECTRICAL CHARACTERISTICS :

PART NUMBER	INDUCTANCE (μ H)	DCR (m Ω) (Max.)	Isat (A) (Max.)	Irms (A) (Max.)	TEST FREQ. (f)
SDC2D11J-1R5N-LF	1.5 \pm 30%	140	1.08	1.40	100KHz
SDC2D11J-3R3N-LF	3.3 \pm 30%	240	0.86	1.00	100KHz
SDC2D11J-4R7N-LF	4.7 \pm 30%	290	0.66	0.94	100KHz
SDC2D11J-5R6N-LF	5.6 \pm 30%	370	0.60	0.82	100KHz
SDC2D11J-6R8N-LF	6.8 \pm 30%	410	0.54	0.79	100KHz
SDC2D11J-8R2N-LF	8.2 \pm 30%	470	0.48	0.75	100KHz
SDC2D11J-100M-LF	10 \pm 20%	570	0.46	0.64	100KHz
SDC2D11J-120M-LF	12 \pm 20%	760	0.43	0.59	100KHz
SDC2D11J-150M-LF	15 \pm 20%	850	0.40	0.51	100KHz
SDC2D11J-220M-LF	22 \pm 20%	1400	0.33	0.41	100KHz

- Isat : DC current at which the inductance drops 30% (typ) from its value without current.
- Irms : The actual current when temperature of coil becomes $\Delta 40^{\circ}\text{C}$. (Ta=+25 $^{\circ}\text{C}$)
- Operating temperature range -25 $^{\circ}\text{C}$ to +120 $^{\circ}\text{C}$, Electrical specifications at 25 $^{\circ}\text{C}$.
- Packing : 7" reel, machine-ready ,embossed plastic tape (1,000 parts per full reel).