



SDC2D09 SERIES

Low Profile Shielded Power Inductors



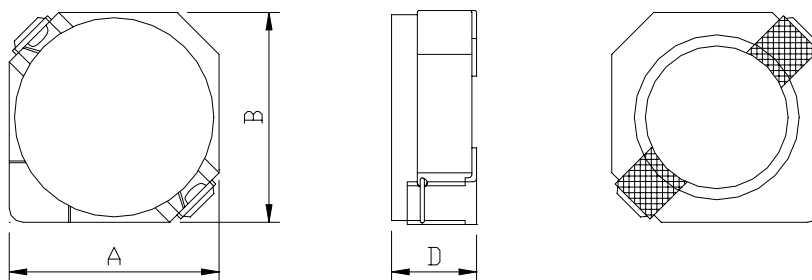
RoHS Compliant

PART NUMBERING SYSTEM

SDC	2D09	—	1 R 2 N	—	LF
TYPE	DIMENSIONS		INDUCTANCE		LEAD FREE

SHAPES AND DIMENSIONS

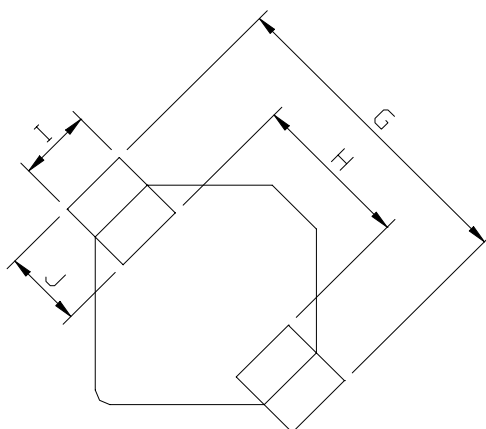
UNIT : mm



A=3.20 max. B=3.20 max. D=1.0 max.

RECOMMENDED PATTERNS

UNIT : mm



G= 4.3 H= 1.7 I= 1.3 J= 1.3



SDC2D09 SERIES

Low Profile Shielded Power Inductors



RoHS Compliant

ELECTRICAL CHARACTERISTICS :

PART NUMBER	INDUCTANCE (μ H)	DCR (m Ω) (Max.)	Isat (A) (Max.)	Irms (A) (Max.)	Stamp
SDC2D09-1R2N-LF	1.2 \pm 30%	97.50	0.80	1.24	A
SDC2D09-1R5N-LF	1.5 \pm 30%	110.0	0.73	1.15	B
SDC2D09-1R8N-LF	1.8 \pm 30%	131.3	0.65	1.06	C
SDC2D09-2N2N-LF	2.2 \pm 30%	143.8	0.60	1.05	D
SDC2D09-2N7N-LF	2.7 \pm 30%	150.0	0.53	0.98	E
SDC2D09-3N3N-LF	3.3 \pm 30%	193.8	0.47	0.84	F
SDC2D09-3N9N-LF	3.9 \pm 30%	225.0	0.45	0.72	G
SDC2D09-4N7N-LF	4.7 \pm 30%	287.5	0.41	0.64	H
SDC2D09-5N6N-LF	5.6 \pm 30%	325.0	0.37	0.59	I
SDC2D09-6N8N-LF	6.8 \pm 30%	425.0	0.33	0.53	J
SDC2D09-8N2N-LF	8.2 \pm 30%	475.0	0.30	0.46	K
SDC2D09-100N-LF	10 \pm 30%	537.5	0.28	0.42	L

- Inductance tested at 100 kHz, 1 Vrms, 0 Adc using an Agilent/HP 4263B LCR meter or equivalent.
- Isat : DC current at which the inductance drops 35% (typ) from its value without current.
- Irms: The actual current when temperature of coil becomes Δ 40°C . (Ta=+20°C)
- Operating temperature range -40°C to +85°C , Electrical specifications at 20°C.
- Packing : 13" reel, machine-ready ,embossed plastic tape (3,500 parts per full reel).