



SDS6025 SERIES ~ SMD Shielded Power Inductors



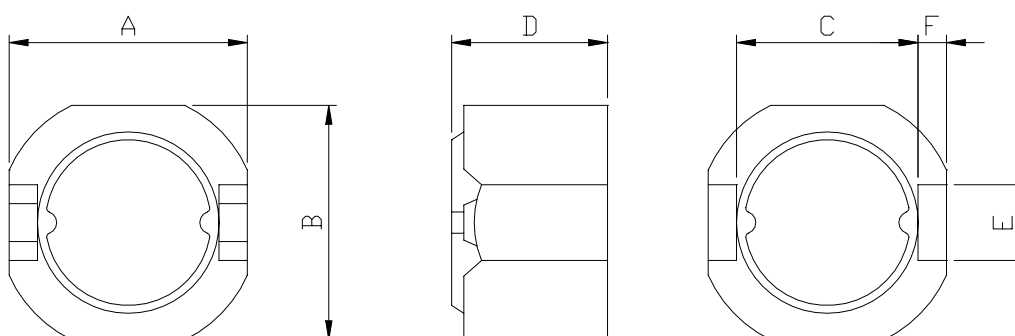
RoHS Compliant

PART NUMBERING SYSTEM

SDS	6 0 2 5	—	6 8 0 M	—	LF
TYPE	DIMENSIONS		INDUCTANCE		LEAD FREE

SHAPES AND DIMENSIONS

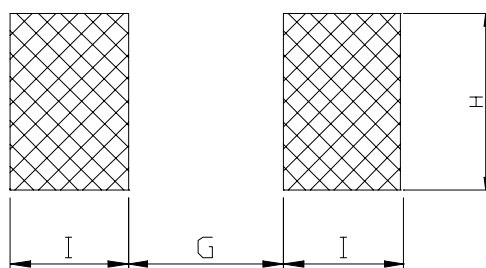
UNIT : mm



A=6.3 Max. B=6.3 Max. C=4.8 D=2.5 Max. E=2.0 F=0.6

RECOMMENDED PATTERNS

UNIT : mm



G= 4.60 H= 2.60 I = 1.00

FEATURES

- Low profile (6.2x6.3 max. square. 2.5mm max. height).
- Magnetically shielded construction and low DC resistance.
- Suitable for large current.
- Ideal for a variety of DC-DC converter inductor application.
- Lead Free and RoHS Compliant.



SDS6025 SERIES ~ SMD Shielded Power Inductors



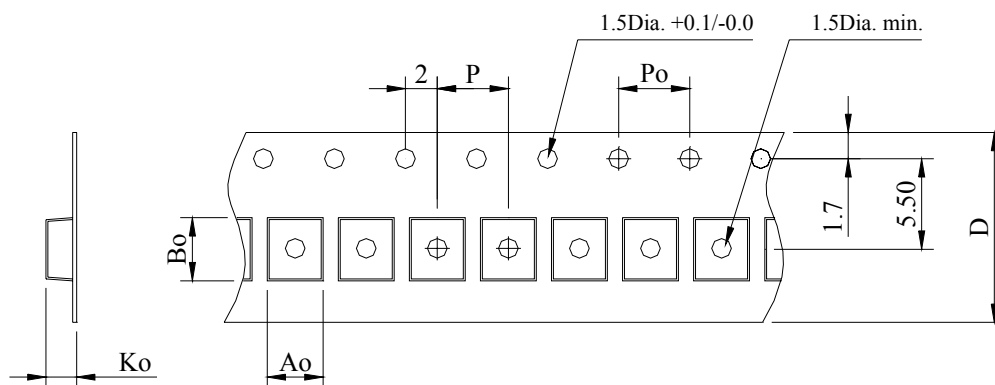
RoHS Compliant

SPECIFICATION TABLE

PART NUMBER	INDUCTANCE (μ H)	DCR (m Ω) (Max.)	Isat (A) (Max.)	Irms (A) (Max.)	TEST FREQ. (f)
SDS6025-1R0M-LF	1.0 \pm 20%	14	3.48	4.31	100KHz
SDS6025-1R5M-LF	1.5 \pm 20%	17	2.83	3.68	100KHz
SDS6025-2R0M-LF	2.0 \pm 20%	21	2.44	3.54	100KHz
SDS6025-3R3M-LF	3.3 \pm 20%	29	1.89	2.73	100KHz
SDS6025-4R3M-LF	4.7 \pm 20%	37	1.65	2.46	100KHz
SDS6025-6R2M-LF	6.2 \pm 20%	52	1.37	1.85	100KHz
SDS6025-100M-LF	10 \pm 20%	77	1.07	1.55	100KHz
SDS6025-120M-LF	12 \pm 20%	90	0.97	1.38	100KHz
SDS6025-150M-LF	15 \pm 20%	105	0.87	1.25	100KHz
SDS6025-180M-LF	18 \pm 20%	129	0.79	1.16	100KHz
SDS6025-220M-LF	22 \pm 20%	154	0.71	1.01	100KHz
SDS6025-270M-LF	27 \pm 20%	204	0.64	0.94	100KHz
SDS6025-330M-LF	33 \pm 20%	229	0.58	0.84	100KHz
SDS6025-390M-LF	39 \pm 20%	294	0.53	0.74	100KHz
SDS6025-470M-LF	47 \pm 20%	348	0.48	0.68	100KHz
SDS6025-560M-LF	56 \pm 20%	413	0.44	0.63	100KHz
SDS6025-680M-LF	68 \pm 20%	475	0.40	0.59	100KHz
SDS6025-820M-LF	82 \pm 20%	558	0.36	0.56	100KHz

- Isat : DC current at which the inductance drops 30%(typ) from its value without current.
- I rms : : Average current for 40°C temperature rise from 20°C ambient.

PACKAGING SPECIFICATION



STAYLE	Q' TY (PCS)	DIMENSIONS (m/m)					
		A_o	B_o	K_o	P	P_o	$D\pm 0.3$
13"	1,500	5.72	5.72	3.00	8.00	4.00	12.0