



# SDS6015LD SERIES

## Low Profile Shielded Power Inductors



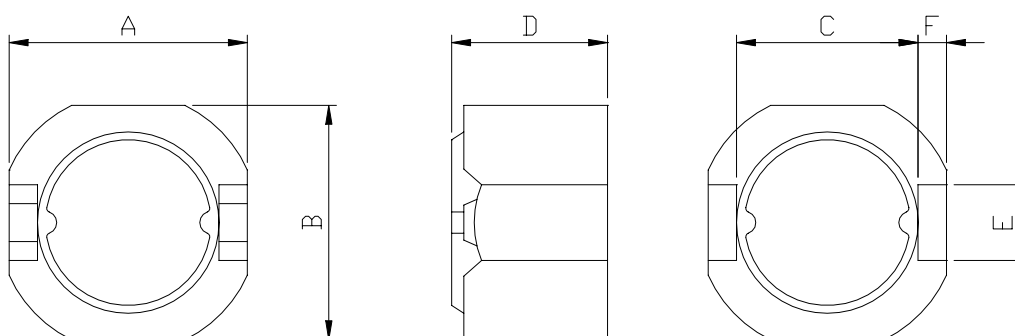
RoHS Compliant

### PART NUMBERING SYSTEM

<b>SDS</b>	<b>6015LD</b>	—	<b>6 R 8 N</b>	—	<b>LF</b>
TYPE	DIMENSIONS		INDUCTANCE		LEAD FREE

### SHAPES AND DIMENSIONS

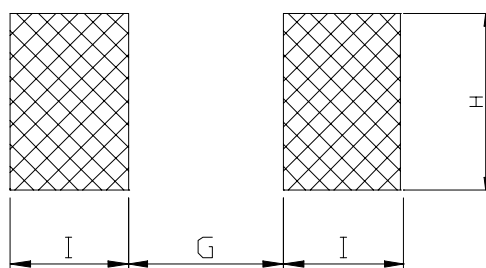
UNIT : mm



**A=6.3 Max. B=6.3 Max. C=4.8 D=1.65 Max. E=2.0 F=0.6**

### RECOMMENDED PATTERNS

UNIT : mm



**G= 4.60 H= 2.60 I = 1.00**

### FEATURES

- Low profile (6.2x6.3 max. square. 1.65mm max. height).
- Magnetically shielded construction and low DC resistance.
- Suitable for large current.
- Ideal for a variety of DC-DC converter inductor application.
- Lead Free and RoHS Compliant.



## SDS6015LD SERIES

### Low Profile Shielded Power Inductors



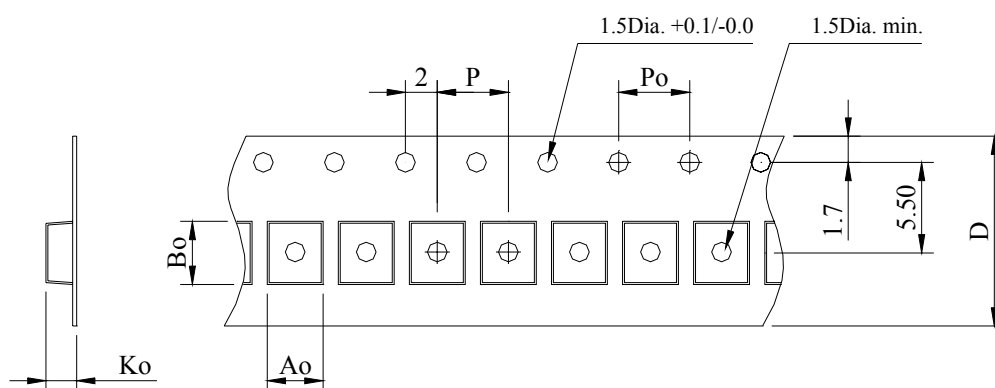
RoHS Compliant

#### SPECIFICATION TABLE

PART NUMBER	INDUCTANCE ( $\mu$ H)	DCR (m $\Omega$ ) (Max.)	Isat (A) (Max.)	Irms (A) (Max.)	TEST FREQ. ( f )
SDS6015LD-3R3P-LF	3.3 $\pm$ 25%	47	1.10	0.82	100KHz
SDS6015LD-4R7P-LF	4.7 $\pm$ 25%	60	1.00	0.75	100KHz
SDS6015LD-6R8P-LF	6.8 $\pm$ 25%	82	0.78	0.58	100KHz
SDS6015LD-100M-LF	10 $\pm$ 20%	106	0.68	0.51	100KHz
SDS6015LD-150M-LF	15 $\pm$ 20%	158	0.55	0.41	100KHz
SDS6015LD-220M-LF	22 $\pm$ 20%	220	0.44	0.33	100KHz
SDS6015LD-330M-LF	33 $\pm$ 20%	380	0.37	0.28	100KHz
SDS6015LD-470M-LF	47 $\pm$ 20%	500	0.32	0.25	100KHz
SDS6015LD-680M-LF	68 $\pm$ 20%	770	0.27	0.21	100KHz
SDS6015LD-101M-LF	100 $\pm$ 20%	1050	0.22	0.16	100KHz

- Isat : DC current at which the inductance drops 35%(typ) from its value without current.
- Irms : : Average current for 40°C temperature rise from 20°C ambient.
- Operating temperature range -40°C to +85°C , Electrical specifications at 20°C .
- PLATING / SOLDER : TIN-SILVER-COPPER (95.5%/4.0%/0.5%)

#### PACKAGING SPECIFICATION



STAYLE	Q' TY (PCS)	DIMENSIONS (m/m)					
		Ao	Bo	Ko	P	Po	D $\pm$ 0.3
13"	2,000	5.72	5.72	1.85	8.00	4.00	12.0