



# SDS6015HP SERIES

## Low Profile Shielded Power Inductors



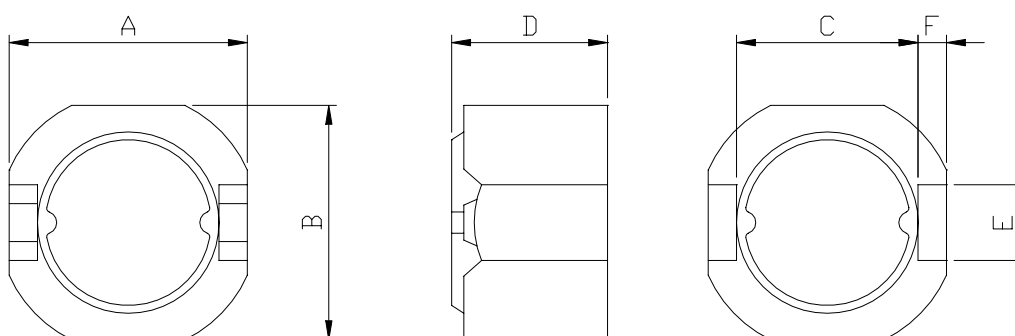
RoHS Compliant

### PART NUMBERING SYSTEM

<b>SDS</b>	<b>6015HP</b>	—	<b>3 R 3 N</b>	<b>LF</b>
TYPE	DIMENSIONS		INDUCTANCE	LEAD FREE

### SHAPES AND DIMENSIONS

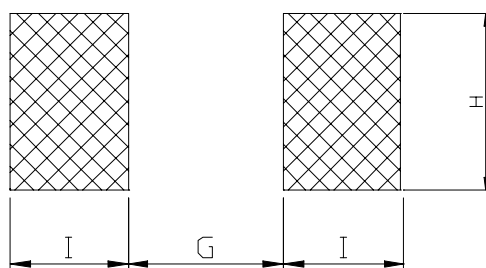
UNIT : mm



**A=6.3 Max. B=6.3 Max. C=4.8 D=1.65 Max. E=2.0 F=0.6**

### RECOMMENDED PATTERNS

UNIT : mm



**G= 4.60 H= 2.60 I = 1.00**

### FEATURES

- Low profile (6.2x6.3 max. square. 1.65mm max. height).
- Magnetically shielded construction and low DC resistance.
- Suitable for large current.
- Ideal for a variety of DC-DC converter inductor application.
- Lead Free and RoHS Compliant.



## SDS6015HP SERIES

### Low Profile Shielded Power Inductors



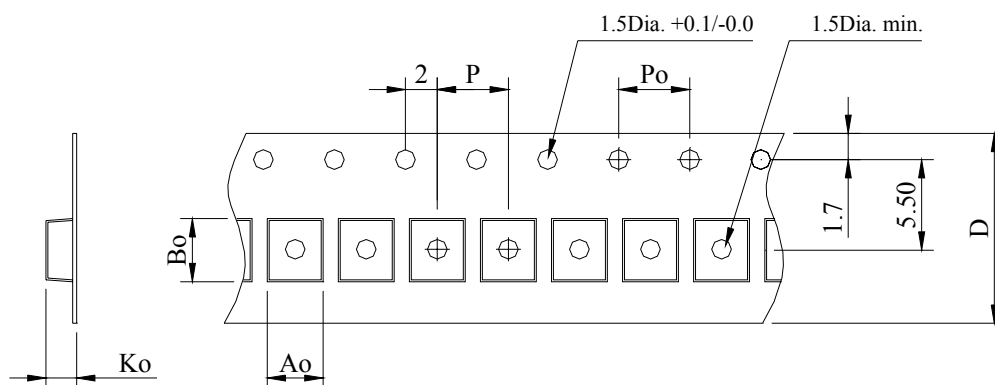
RoHS Compliant

#### SPECIFICATION TABLE

PART NUMBER	INDUCTANCE ( $\mu$ H)	DCR (m $\Omega$ ) (Max.)	Isat (A) (Max.)	I <sub>rms</sub> (A) (Max.)	TEST FREQ. ( f )
SDS6015HP-R60N-LF	1.4 $\pm$ 30%	22	6.00	3.90	100KHz
SDS6015HP-R90N-LF	2.0 $\pm$ 30%	27	5.00	3.50	100KHz
SDS6015HP-1R4N-LF	3.3 $\pm$ 30%	40	3.90	2.80	100KHz
SDS6015HP-2R0N-LF	5.1 $\pm$ 30%	57	3.20	2.30	100KHz
SDS6015HP-3R3N-LF	6.8 $\pm$ 30%	96	2.60	1.70	100KHz

- Isat : DC current at which the inductance drops 35%(typ) from its value without current.
- I<sub>rms</sub> : Average current for 40°C temperature rise from 20°C ambient.
- Operating temperature range -40°C to +85°C , Electrical specifications at 20°C .
- PLATING / SOLDER : TIN-SILVER-COPPER (95.5%/4.0%/0.5%)

#### PACKAGING SPECIFICATION



STAYLE	Q' TY (PCS)	DIMENSIONS (m/m)					
		Ao	Bo	Ko	P	Po	D $\pm$ 0.3
13"	2,000	5.72	5.72	1.85	8.00	4.00	12.0