



SDS3D12 SERIES

Low Profile Shielded Power Inductors



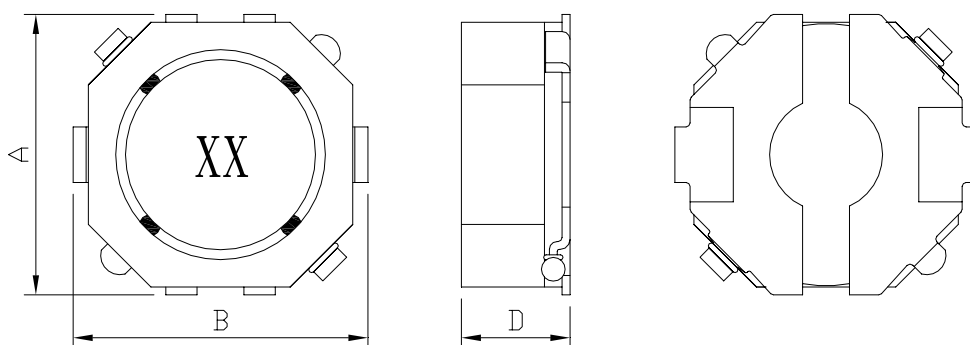
RoHS Compliant

PART NUMBERING SYSTEM

SDS	3D12	—	2 2 0 M	—	LF
TYPE	DIMENSIONS		INDUCTANCE		LEAD FREE

SHAPES AND DIMENSIONS

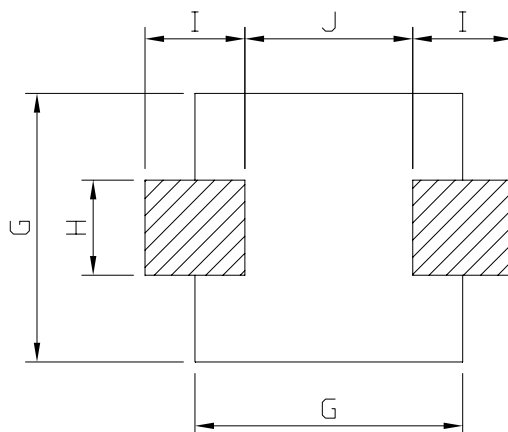
UNIT : mm



A=4.0 Max. B=4.0 Max. D=1.2 Max.

RECOMMENDED PATTERNS

UNIT : mm



G=4.0 H=1.5 I=1.4 J=2.0



SDS3D12 SERIES

Low Profile Shielded Power Inductors



RoHS Compliant

ELECTRICAL CHARACTERISTICS :

PART NUMBER	INDUCTANCE (μ H)	DCR (m Ω) Max.(Typ.)	Isat (A) (Max.)	Irms (A) (Max.)	Stamp
SDS3D12-1R2N-LF	1.2 \pm 30%	81(65)	1.60	1.30	1R0
SDS3D12-1R5N-LF	1.5 \pm 30%	100(80)	1.40	1.10	1R5
SDS3D12-2R2N-LF	2.2 \pm 30%	125(100)	1.20	0.92	2R2
SDS3D12-2R2N-LF	2.7 \pm 30%	188(150)	1.10	0.87	2R7
SDS3D12-3R3N-LF	3.3 \pm 30%	256(205)	1.00	0.83	3R3
SDS3D12-4R7N-LF	4.7 \pm 30%	287(230)	0.90	0.80	4R7
SDS3D12-5R6N-LF	5.6 \pm 30%	380(305)	0.80	0.75	5R6
SDS3D12-6R8N-LF	6.8 \pm 30%	450(360)	0.70	0.65	6R8
SDS3D12-8R2N-LF	8.2 \pm 30%	500(400)	0.60	0.55	8R2
SDS3D12-100M-LF	10 \pm 20%	650(520)	0.50	0.45	100
SDS3D12-120M-LF	12 \pm 20%	687(550)	0.45	0.40	120
SDS3D12-150M-LF	15 \pm 20%	787(630)	0.40	0.37	150
SDS3D12-180M-LF	18 \pm 20%	875(700)	0.35	0.35	180
SDS3D12-220M-LF	22 \pm 20%	962 (770)	0.30	0.30	220

- Inductance tested at 100 kHz, 0.1 Vrms, 0 Adc using an Agilent/HP 4263B LCR meter or equivalent.
- Isat : DC current at which the inductance drops 30% (typ) from its value without current.
- Irms: The actual current when temperature of coil becomes Δ 40°C . (Ta=+20°C)
- Operating temperature range -40°C to +85°C , Electrical specifications at 20°C.
- Packing : 13" reel, machine-ready ,embossed plastic tape (3,000 parts per full reel).