



SDS3012D SERIES

Low Profile Shielded Power Inductors



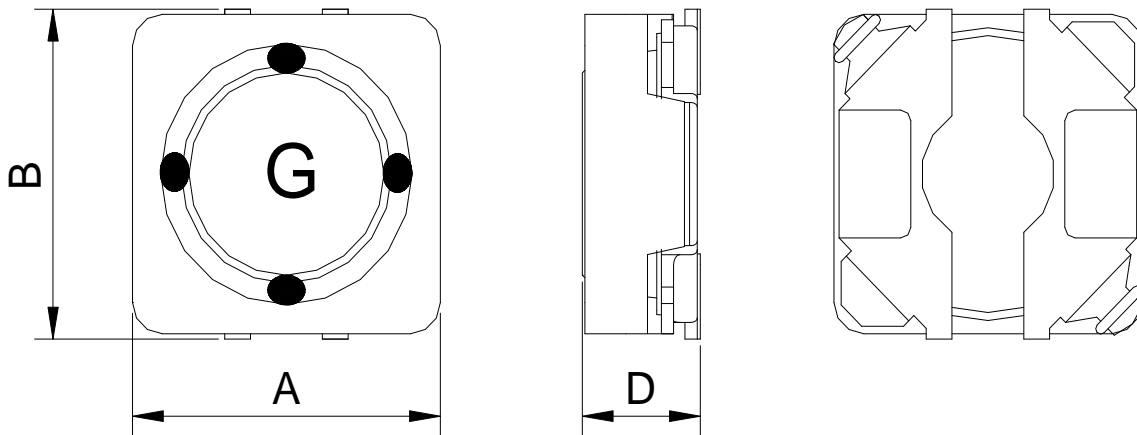
RoHS Compliant

PART NUMBERING SYSTEM

| | | | | | |
|------------|--------------|----------|----------------|----------|-----------|
| SDS | 3012D | — | 3 R 3 N | — | LF |
| TYPE | DIMENSIONS | | INDUCTANCE | | LEAD FREE |

SHAPES AND DIMENSIONS

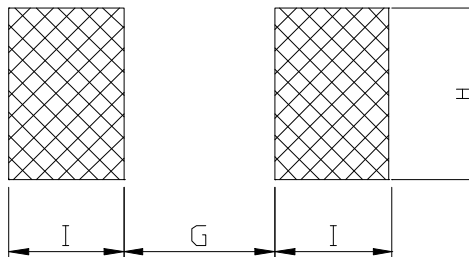
UNIT : mm



A=3.2 Max. B=3.3 Max. D=1.2 Max.

RECOMMENDED PATTERNS

UNIT : mm



G=0.6 H=3.3 I=1.3



SDS3012D SERIES

Low Profile Shielded Power Inductors



RoHS Compliant

ELECTRICAL CHARACTERISTICS :

| PART NUMBER | INDUCTANCE (μ H) | DCR (Ω) Max.(Typ.) | Isat (A) (Max.) | Irms (A) (Max.) | Stamp |
|------------------|--------------------------|--------------------------------|----------------------|----------------------|-------|
| SDS3012D-1R0N-LF | 1.0 \pm 30% | 66.0m(55m) | 1.50 | 1.80 | A |
| SDS3012D-1R2N-LF | 1.2 \pm 30% | 75.6m(63m) | 1.40 | 1.65 | B |
| SDS3012D-1R5N-LF | 1.5 \pm 30% | 90.0m(75m) | 1.30 | 1.50 | C |
| SDS3012D-2R2N-LF | 2.2 \pm 30% | 0.132(0.11) | 1.00 | 1.30 | E |
| SDS3012D-3R3N-LF | 3.3 \pm 30% | 0.180(0.15) | 0.87 | 1.10 | G |
| SDS3012D-3R9N-LF | 3.9 \pm 20% | 0.216(0.18) | 0.82 | 1.00 | H |
| SDS3012D-4R7M-LF | 4.7 \pm 20% | 0.252(0.21) | 0.75 | 0.90 | I |
| SDS3012D-5R6M-LF | 5.6 \pm 20% | 0.324(0.27) | 0.65 | 0.80 | J |
| SDS3012D-6R8M-LF | 6.8 \pm 20% | 0.396(0.33) | 0.60 | 0.70 | K |
| SDS3012D-8R2M-LF | 8.2 \pm 20% | 0.456(0.38) | 0.55 | 0.65 | L |
| SDS3012D-100M-LF | 10 \pm 20% | 0.492(0.41) | 0.50 | 0.60 | M |
| SDS3012D-120M-LF | 12 \pm 20% | 0.660(0.55) | 0.45 | 0.55 | N |
| SDS3012D-150M-LF | 15 \pm 20% | 0.816(0.68) | 0.40 | 0.45 | O |
| SDS3012D-220M-LF | 22 \pm 20% | 1.140(0.95) | 0.35 | 0.35 | Q |

- Inductance tested at 100 kHz, 0.1 Vrms, 0 Adc using an Agilent/HP 4284B LCR meter or equivalent.
- Isat : DC current at which the inductance drops 30% (typ) from its value without current.
- Irms: The actual current when temperature of coil becomes Δ 40°C . (Ta=+25°C)
- Operating temperature range -40°C to +85°C , Electrical specifications at 25°C.