



## SPO1606 SERIES ~

### Low Profile Power Inductors



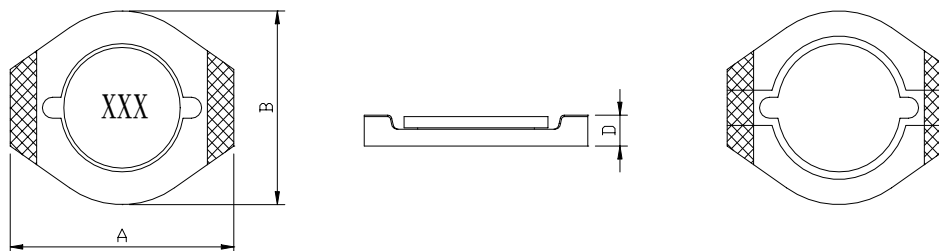
RoHS Compliant

#### PART NUMBERING SYSTEM

<b>SPO</b>	<b>1 6 0 6</b>	—	<b>6 8 0 M</b>	—	<b>LF</b>
TYPE	DIMENSIONS		INDUCTANCE		LEAD FREE

#### SHAPES AND DIMENSIONS

UNIT : mm



**A= 6.5 Max. B= 5.23 Max. D= 2.0 Max.**

#### FEATURES

- Only **2.0 mm** high, yet handles **up to 2.3 Amps**
- Inductance value from **1.0uH to 1,000uH**
- Ceramic cover provides **best possible surface for pick and place** operations.
- **RoHS-compliant.** 260°C compatible.



## SPO1606 SERIES ~

### Low Profile Power Inductors



RoHS Compliant

#### SPECIFICATION TABLE

PART NUMBER	INDUCTANCE ( $\mu$ H)	DCR( $\Omega$ ) (Max.)	Isat ( A ) (Max.)	Irms ( A ) (Max.)	SRF(MHz) (Ref.)
SPO1606-1R0M-LF	1.0 $\pm$ 20%	0.04	2.50	2.30	230
SPO1606-1R5M-LF	1.5 $\pm$ 20%	0.06	2.20	2.10	180
SPO1606-2R2M-LF	2.2 $\pm$ 20%	0.07	1.80	1.70	140
SPO1606-3R3M-LF	3.3 $\pm$ 20%	0.12	1.40	1.30	110
SPO1606-4R7M-LF	4.7 $\pm$ 20%	0.15	1.20	1.10	100
SPO1606-6R8M-LF	6.8 $\pm$ 20%	0.20	1.10	1.00	80
SPO1606-8R2M-LF	8.2 $\pm$ 20%	0.23	1.00	0.95	70
SPO1606-100M-LF	10 $\pm$ 20%	0.30	1.00	0.90	60
SPO1606-150M-LF	15 $\pm$ 20%	0.40	0.80	0.70	45
SPO1606-220M-LF	22 $\pm$ 20%	0.54	0.60	0.50	35
SPO1606-330M-LF	33 $\pm$ 20%	0.74	0.50	0.45	30
SPO1606-470M-LF	47 $\pm$ 20%	1.10	0.45	0.40	22
SPO1606-680M-LF	68 $\pm$ 20%	1.60	0.35	0.35	20
SPO1606-101M-LF	100 $\pm$ 20%	2.30	0.30	0.30	15
SPO1606-151M-LF	150 $\pm$ 20%	3.50	0.25	0.25	10
SPO1606-221M-LF	220 $\pm$ 20%	5.70	0.20	0.18	9
SPO1606-331M-LF	330 $\pm$ 20%	8.20	0.16	0.16	8
SPO1606-471M-LF	470 $\pm$ 20%	10.8	0.14	0.12	7
SPO1606-681M-LF	680 $\pm$ 20%	17.2	0.12	0.10	5
SPO1606-102M-LF	1000 $\pm$ 20%	22.6	0.08	0.08	4

- DC current at which the inductance drops 10% (typ) from its value without current.
- Operating temperature range -40°C to +85°C .
- Electrical specifications at 25°C.



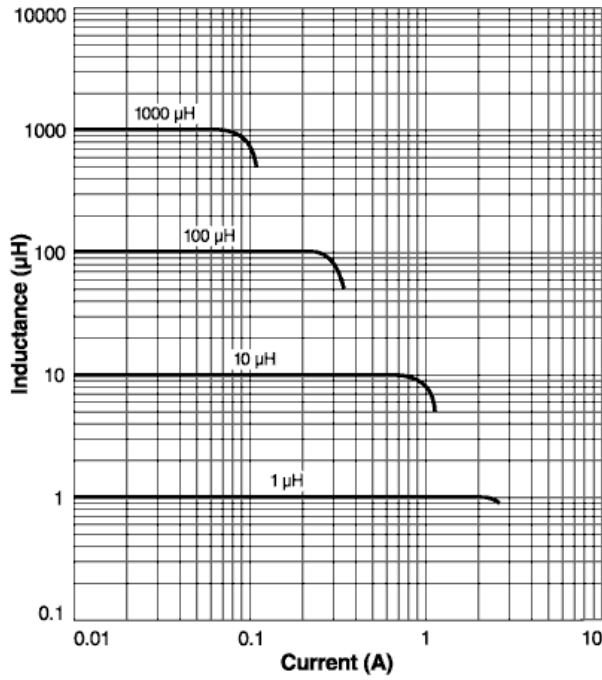
## SPO1606 SERIES ~

### Low Profile Power Inductors

#### Typical L vs Current



RoHS Compliant



#### Typical L vs Frequency

