



SDR1307K SERIES – SMD POWER INDUCTORS



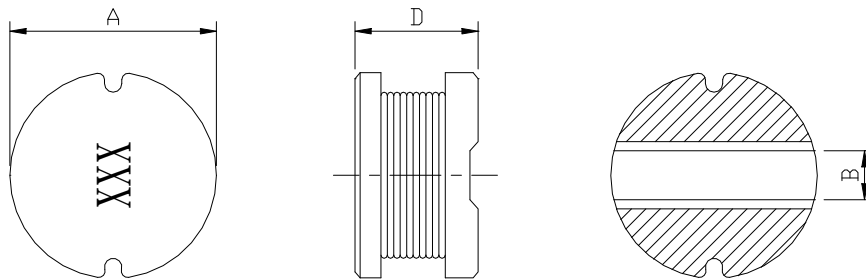
RoHS Compliant

PART NUMBERING SYSTEM

<u>SDR</u>	<u>1 3 0 7 K</u>	—	<u>6 8 0 K</u>	—	<u>LF</u>
TYPE	DIMENSIONS		INDUCTANCE		LEAD FREE

SHAPES AND DIMENSIONS

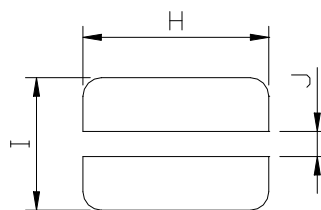
UNIT : mm



A=13.3 Max. B=5.0 Typ. D=7.30 Max.

RECOMMENDED PATTERNS

UNIT : mm



H=14.0 Max. I=14.0 Max. J=4.5 Ref.

FEATURES

- ⊙ Available for lead free and RoHS compliant
- ⊙ Excellent solder ability and high heat resistance
- ⊙ Inductance value from 1.5uH to 1,000uH
- ⊙ Excellent terminal strength constructions
- ⊙ Diameter of only 13.3mm maximum and low profile of 7.3mm max.

APPLICATION

- ⊙ Input / output of DC/DC converters
- ⊙ Power supplies for LCD TVs , Car radios , Camcorders , Portable communication equipment

**SDR1307K SERIES – SMD POWER INDUCTORS****SPECIFICATION TABLE**

PART NUMBER	INDUCTANCE (μ H)	Q (Ref.)	DCR (m Ω) (Max.)	IDC (A) (Max.)	TEST FREQ. (MHz)
SDR1307K-1R5M-LF	1.5 \pm 20%	20	5.0	20.00	7.96
SDR1307K-2R2M-LF	2.2 \pm 20%	22	6.0	18.00	7.96
SDR1307K-2R7M-LF	2.7 \pm 20%	24	8.0	16.00	7.96
SDR1307K-3R3M-LF	3.3 \pm 20%	26	8.7	15.00	7.96
SDR1307K-4R7M-LF	4.7 \pm 20%	25	10.0	13.00	7.96
SDR1307K-5R6M-LF	5.6 \pm 20%	24	15.0	11.00	7.96
SDR1307K-6R8M-LF	6.8 \pm 20%	24	17.0	10.50	7.96
SDR1307K-8R2M-LF	8.2 \pm 20%	24	19.0	9.80	7.96
SDR1307K-100M-LF	10 \pm 20%	22	21.0	9.20	2.52
SDR1307K-120M-LF	12 \pm 20%	25	30.0	8.00	2.52
SDR1307K-150M-LF	15 \pm 20%	28	34.0	7.50	2.52
SDR1307K-180M-LF	18 \pm 20%	28	36.0	7.00	2.52
SDR1307K-220M-LF	22 \pm 20%	40	47.0	6.50	2.52
SDR1307K-270K-LF	27 \pm 10%	35	60.0	5.50	2.52
SDR1307K-330K-LF	33 \pm 10%	35	65.0	5.00	2.52
SDR1307K-390K-LF	39 \pm 10%	28	75.0	4.60	2.52
SDR1307K-470K-LF	47 \pm 10%	24	82.0	4.20	2.52
SDR1307K-560K-LF	56 \pm 10%	22	100.0	3.80	2.52
SDR1307K-680K-LF	68 \pm 10%	24	120.0	3.50	2.52
SDR1307K-820K-LF	82 \pm 10%	18	140.0	3.20	2.52
SDR1307K-101K-LF	100 \pm 10%	25	180.0	3.00	0.796
SDR1307K-121K-LF	120 \pm 10%	20	210.0	2.80	0.796
SDR1307K-151K-LF	150 \pm 10%	20	250.0	2.60	0.796
SDR1307K-181K-LF	180 \pm 10%	18	280.0	2.30	0.796
SDR1307K-221K-LF	220 \pm 10%	15	360.0	2.10	0.796
SDR1307K-271K-LF	270 \pm 10%	15	410.0	1.80	0.796
SDR1307K-331K-LF	330 \pm 10%	15	520.0	1.60	0.796
SDR1307K-391K-LF	390 \pm 10%	12	600.0	1.50	0.796
SDR1307K-471K-LF	470 \pm 10%	12	720.0	1.40	0.796
SDR1307K-561K-LF	560 \pm 10%	10	880.0	1.30	0.796
SDR1307K-681K-LF	680 \pm 10%	10	1000.0	1.20	0.796
SDR1307K-821K-LF	820 \pm 10%	10	1300.0	1.10	0.796
SDR1307K-102K-LF	1000 \pm 10%	10	1600.0	1.00	0.252

- DC current at which the inductance drops 10% (typ) from its value without current.
- Operating temperature range -40°C to +125°C ,
- Electrical specifications at 25°C .

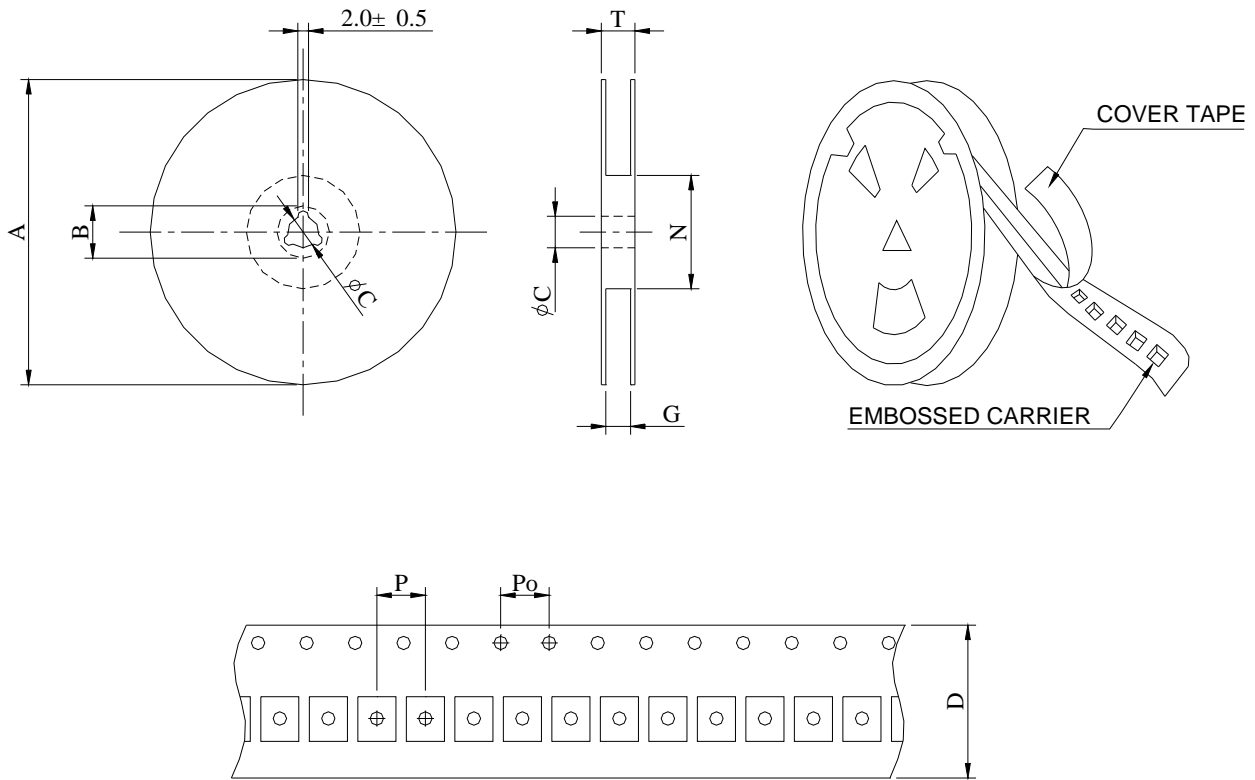


SDR1307K SERIES – SMD POWER INDUCTORS



RoHS Compliant

PACKAGING SPECIFICATION



SERIES	Q' TY (PCS)	DIMENSIONS (m/m)								
		A	B±0.8	C±0.5	D	G ⁺⁰	N ⁰	P	Po	T
SDR1307K	250	330	21	13	24	26	50	12	4	30.4