



SSB3015D SERIES

Low Profile Power Inductors



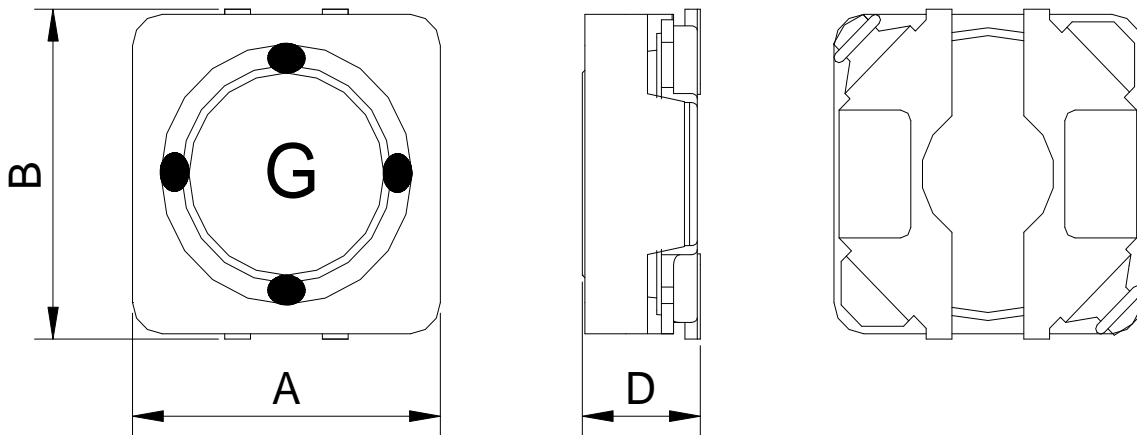
RoHS Compliant

PART NUMBERING SYSTEM

SSB	3015D	—	3 R 3 N	—	LF
TYPE	DIMENSIONS		INDUCTANCE		LEAD FREE

SHAPES AND DIMENSIONS

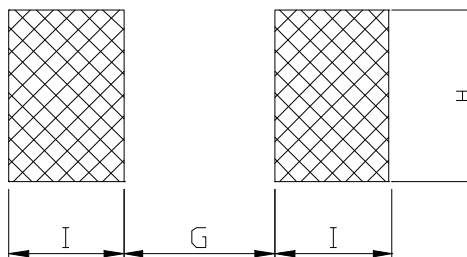
UNIT : mm



A=3.1 Max. B=3.1 Max. D=1.5 Max.

RECOMMENDED PATTERNS

UNIT : mm



G=0.6 H=3.3 I=1.3



SSB3015D SERIES

Low Profile Shielded Power Inductors



RoHS Compliant

ELECTRICAL CHARACTERISTICS :

PART NUMBER	INDUCTANCE (μ H)	DCR (Ω) Max.(Typ.)	Isat (A) (Max.)	Irms (A) (Max.)	Stamp
SSB3015D-R68N-LF	0.68 \pm 30%	45.6m(38m)	3.40	2.00	8
SSB3015D-1R0N-LF	1.0 \pm 30%	52.8m(44m)	3.00	1.85	A
SSB3015D-1R2N-LF	1.2 \pm 30%	66.0m(55m)	2.50	1.70	B
SSB3015D-1R5N-LF	1.5 \pm 30%	85.2m(71m)	2.20	1.55	C
SSB3015D-1R8N-LF	1.8 \pm 30%	94.8m(79m)	2.00	1.45	D
SSB3015D-2R2N-LF	2.2 \pm 30%	0.119(99m)	1.90	1.35	E
SSB3015D-3R3N-LF	3.3 \pm 30%	0.144(0.12)	1.60	1.25	G
SSB3015D-4R7M-LF	4.7 \pm 20%	0.216(0.18)	1.30	1.05	I
SSB3015D-6R8M-LF	6.8 \pm 20%	0.264(0.22)	1.10	0.95	K
SSB3015D-100M-LF	10 \pm 20%	0.396(0.33)	0.95	0.75	M
SSB3015D-150M-LF	15 \pm 20%	0.624(0.52)	0.82	0.61	N
SSB3015D-220M-LF	22 \pm 20%	0.936(0.78)	0.65	0.42	Q

- Inductance tested at 100 kHz, 0.1 Vrms, 0 Adc using an Agilent/HP 4284B LCR meter or equivalent.
- Isat : DC current at which the inductance drops 30% (typ) from its value without current.
- Iirms: The actual current when temperature of coil becomes Δ 40°C . (Ta= +25°C)
 Operating temperature range -40°C to +85°C , Electrical specifications at 25°C.