



SD05022 SERIES ~ SMD Power Inductors



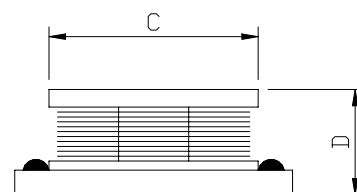
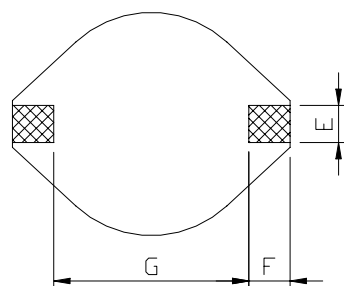
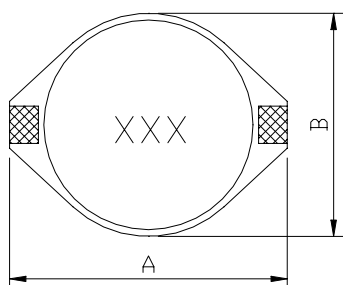
RoHS Compliant

PART NUMBERING SYSTEM

SDO	5 0 2 2	—	1 R 0 M	—	LF
TYPE	DIMENSIONS		INDUCTANCE		LEAD FREE

SHAPES AND DIMENSIONS

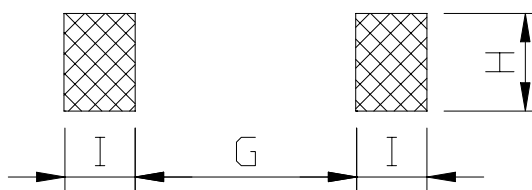
UNIT : mm



A=18.54 Max. B=15.24 Max. C=12.70 Dia. D=7.11 Max. E=2.54 F=2.54 G=12.7

RECOMMENDED PATTERNS

UNIT : mm



G=12.7 H=2.79 I=2.92

FEATURES

- Very high current rating - **up to 8.6 Arms, 20 A saturating current!**
- Inductance ratings from 1 to 1000 μ H
- **Flat top** for reliable surface mounting
- **Robust temperature deflection** prevents damage during solder reflow
- Custom versions available
- **RoHS-compliant.** 260°C compatible. Gold over nickel over phos bronze terminations
-



SDO5022 SERIES ~ SMD Power Inductors



RoHS Compliant

SPECIFICATION TABLE

PART NUMBER	INDUCTANCE (μ H)	DCR (Ω) (Max.)	Isat (A) (Max.)	Irms (A) (Max.)	SRF(MHz) (Ref.)
SDO5022-1R0M-LF	1.0 \pm 20%	0.009	20.0	8.6	80
SDO5022-2R2M-LF	2.2 \pm 20%	0.014	16.0	7.1	80
SDO5022-3R3M-LF	3.3 \pm 20%	0.018	14.0	6.2	60
SDO5022-5R6M-LF	5.6 \pm 20%	0.020	12.0	5.3	40
SDO5022-8R2M-LF	8.2 \pm 20%	0.029	10.0	4.8	30
SDO5022-100M-LF	10 \pm 20%	0.031	10.0	4.3	30
SDO5022-150M-LF	15 \pm 20%	0.036	8.0	4.0	22
SDO5022-220M-LF	22 \pm 20%	0.047	7.0	3.5	20
SDO5022-330M-LF	33 \pm 20%	0.066	5.5	3.0	15
SDO5022-470M-LF	47 \pm 20%	0.086	4.5	2.6	9
SDO5022-680M-LF	68 \pm 20%	0.13	3.5	2.3	8
SDO5022-101M-LF	100 \pm 20%	0.19	3.0	1.8	7
SDO5022-151M-LF	150 \pm 20%	0.25	2.6	1.5	6
SDO5022-221M-LF	220 \pm 20%	0.38	2.4	1.2	5
SDO5022-331M-LF	330 \pm 20%	0.56	1.9	1.0	4
SDO5022-471M-LF	470 \pm 20%	0.85	1.4	0.82	3
SDO5022-681M-LF	680 \pm 20%	1.10	1.2	0.72	2.5
SDO5022-102M-LF	1000 \pm 20%	1.80	1.0	0.56	2.0

1. Inductance is measured with a LCR meter 4284A or equivalent.
2. Inductance drop=10% typ. at rated current.
3. Operating temperature range -40°C to +85°C
4. Electrical specifications at 25°C

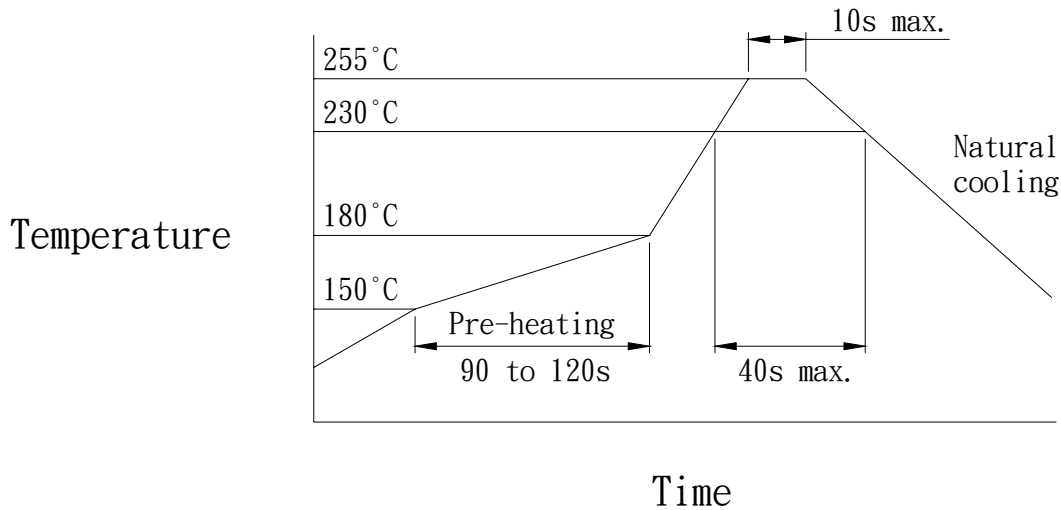


SDO5022 SERIES ~ SMD Power Inductors

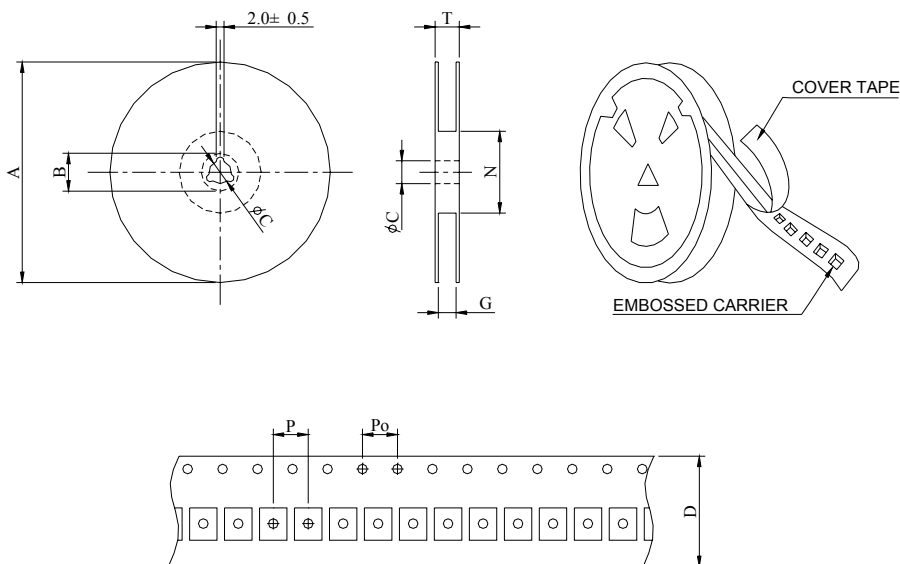


RoHS Compliant

REFLOW SOLDERINGS



PACKAGING SPECIFICATION



SERIES	STAYLE	Q' TY (PCS)	DIMENSIONS (m/m)								
			A	B ± 0.8	C ± 0.5	D	G $^{+0}$	N 0	P	Po	T
SDO5022	13-32	250	330	21	13	32	34	100	20	4	38.4